



FIG Working Week 2024

19-24 May

Accra, Ghana

Your World, Our World:
Resilient Environment
and Sustainable
Resource Management
for All

Presented at the FIG Working Week 2024,
19-24 May 2024 in Accra, Ghana

Exploring Technology integration through FELA in Nigeria

OPEYEMI MICHAEL AJAYI (Finland), KIRSIKKA RIEKKINEN (Finland) and
OLUWAFEMI ADEKOLA (Finland)

AALTO UNIVERSITY, FINLAND

ORGANISED BY



PLATINUM SPONSORS





FIG Working Week 2024

19-24 May

Accra, Ghana

Your World, Our World:
Resilient Environment
and Sustainable
Resource Management
for All

Introduction

Efficient land administration systems play a crucial role, particularly in developing nations that are experiencing rapid urban population growth and significant changes in land use.

The emergence of novel technologies has presented unparalleled prospects to foster innovation and enhance the efficiency of LAS.

Transitioning from traditional methods to technology-driven land administration systems is associated with the ever-changing nature of emerging land issues.

This study endeavours to evaluate Nigerian land administration within the context of the Framework for Effective Land Administration (FELA), focusing on technological integration.





FIG Working Week 2024

19-24 May

Accra, Ghana

Your World, Our World:
Resilient Environment
and Sustainable
Resource Management
for All

The Framework for Effective Land Administration (FELA)

The United Nations Committee of Experts on Global Geospatial Information Management, endorsed the framework for effective land administration (FELA).

FELA is a comprehensive policy guide created by the Panel of Experts in Land Administration and Management.

The goal is to raise the level of knowledge and awareness of land administration by means of both traditional and cutting-edge methods.

Technology integration is a vital aspect of all strategic pathways in FELA as it enhances the efficiency, transparency, and accuracy of land administration processes.

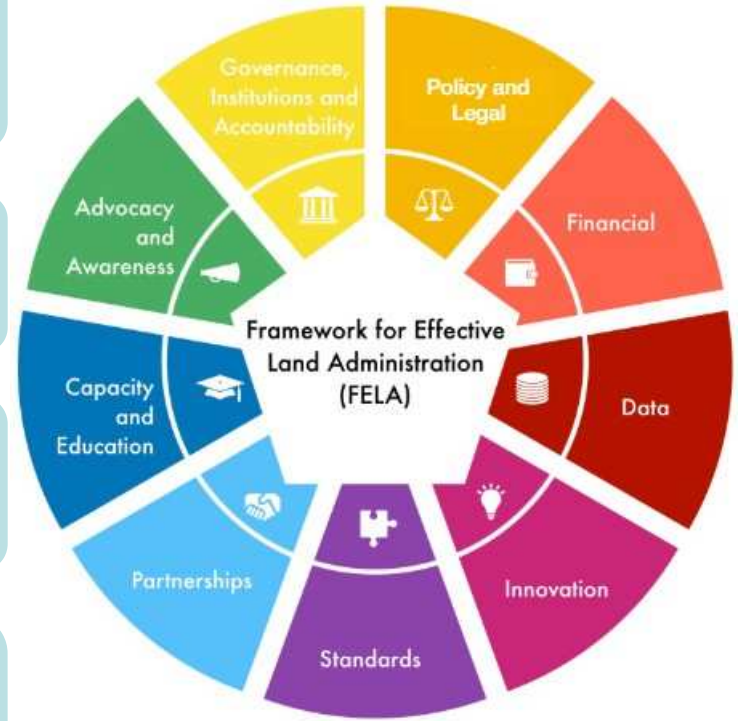




FIG Working Week 2024

19-24 May

Accra, Ghana

Your World, Our World:
Resilient Environment
and Sustainable
Resource Management
for All

Methodology

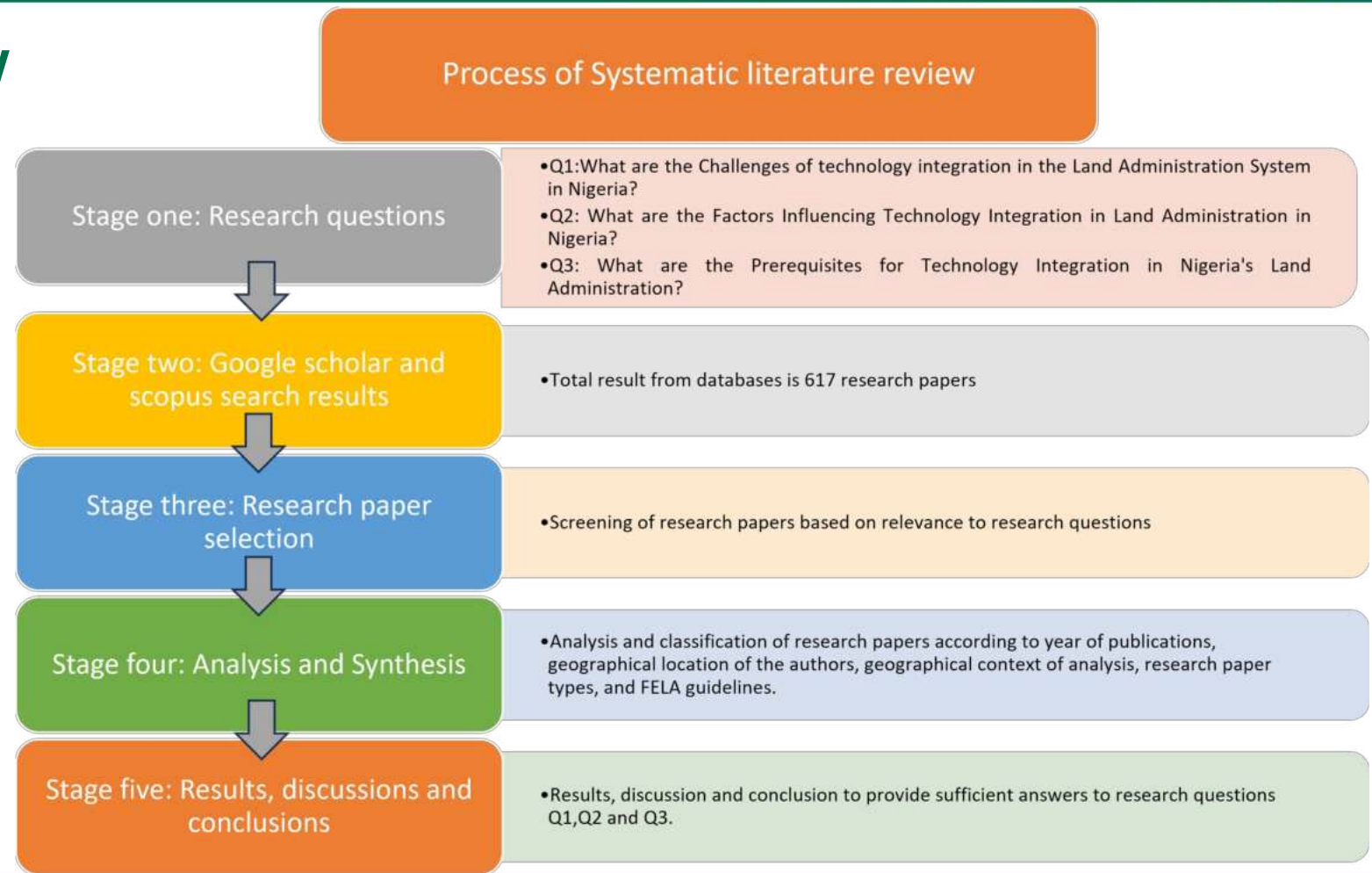




FIG Working Week 2024

19-24 May

Accra, Ghana

Your World, Our World:
Resilient Environment
and Sustainable
Resource Management
for All

Results: Challenges of technology integration in the Land Administration System in Nigeria

Cadastral system predominantly relied on analogue methods, wherein physical files were manually stored and retrieved for various cadastre-related tasks.

Deteriorating infrastructure, limited internet access, limited baseline data and a shortage of skilled personnel.

A significant proportion of private surveyors were trained in traditional surveying techniques, lacking adequate understanding of geospatial information practices.

Suboptimal utilisation of information and communication technology (ICT).

ORGANISED BY



PLATINUM SPONSORS





FIG Working Week 2024

19-24 May

Accra, Ghana

Your World, Our World:
Resilient Environment
and Sustainable
Resource Management
for All

Results: Factors for technology integration in Land Administration in Nigeria

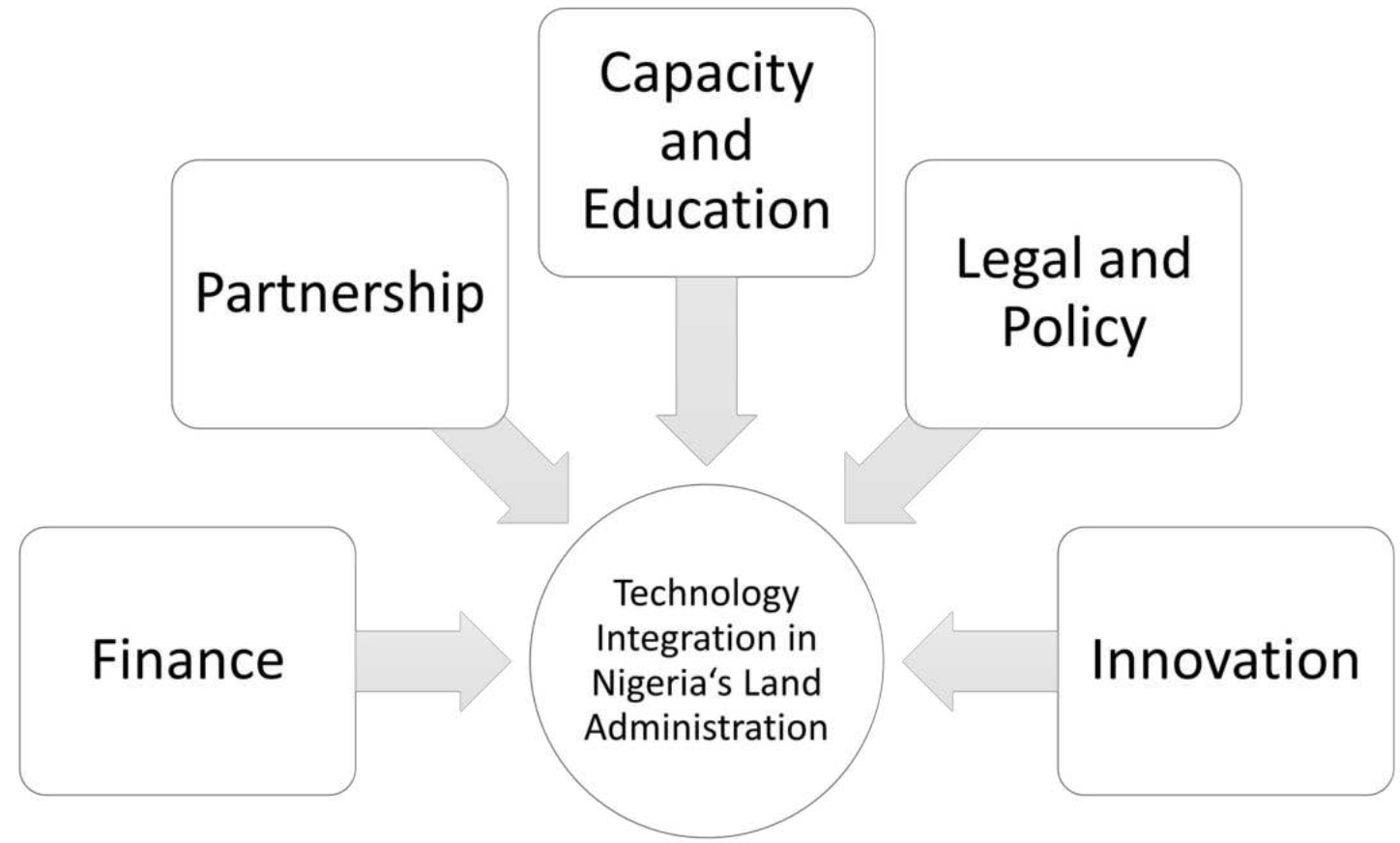




FIG Working Week 2024

19-24 May

Accra, Ghana

Your World, Our World:
Resilient Environment
and Sustainable
Resource Management
for All

Results: Prerequisites for Technology Integration in Land Administration in Nigeria



This research introduces a step to evaluate the feasibility of integrating technology into the Nigerian Land Administration System.



The proposed steps aim at assessing the potential benefits of technology integration in land administration.



Comprising five key steps, these steps offer a systematic approach to evaluate the viability of incorporating technology into land administration practices in Nigeria.

ORGANISED BY



PLATINUM SPONSORS





FIG Working Week 2024

19-24 May

Accra, Ghana

Your World, Our World:
Resilient Environment
and Sustainable
Resource Management
for All

Results: Prerequisites for Technology Integration in Land Administration in Nigeria

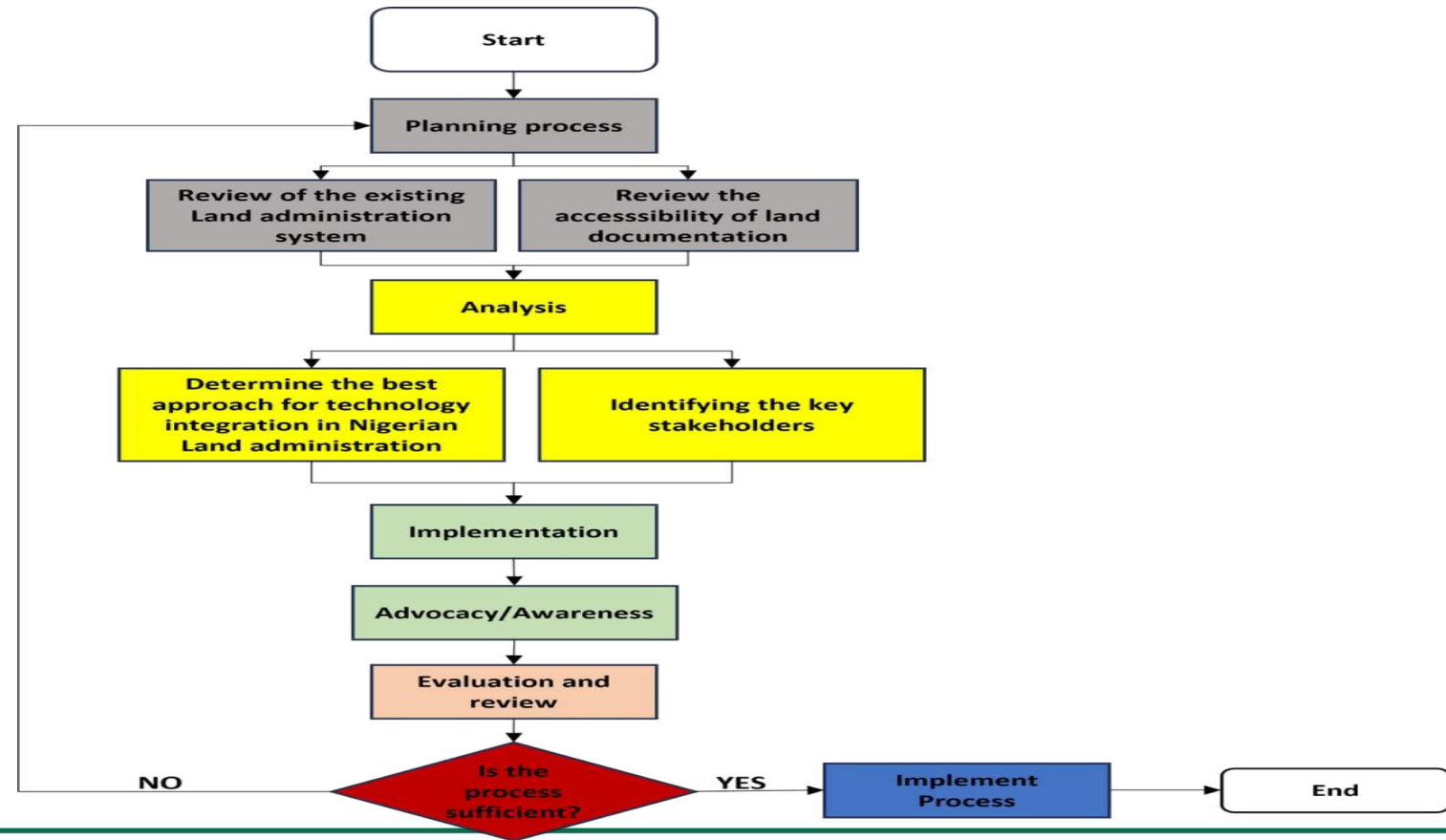




FIG Working Week 2024

19-24 May

Accra, Ghana

Your World, Our World:
Resilient Environment
and Sustainable
Resource Management
for All

Conclusion

Innovation, finance, partnerships, capacity, and policy and legal frameworks are crucial components for integrating technology into Nigeria's land administration system, in line with FELA.

Establishing a technology-based land administration system is complicated, particularly in nations such as Nigeria where digital mapping (geometric) data are scarce.

This study also provides a prerequisite for exploring the integration of technology in land administration across the country.

ORGANISED BY



PLATINUM SPONSORS





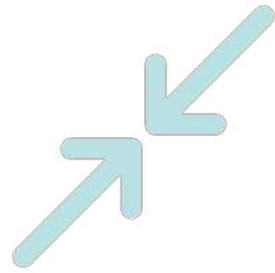
FIG Working Week 2024

19-24 May

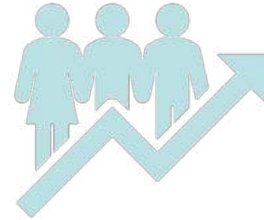
Accra, Ghana

Your World, Our World:
Resilient Environment
and Sustainable
Resource Management
for All

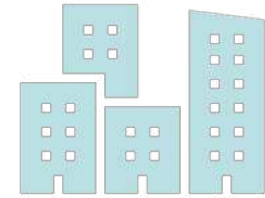
Conclusion



Exploring Technology Integration through FELA in Nigeria can significantly contribute to several Sustainable Development Goals (SDGs), particularly: SDG 1, SDG 5, SDG 9, SDG 11, SDG 16 and SDG 17.



Further research is recommended to evaluate the effectiveness of various technology applications in Nigeria's land administration system and their impact on operations.



A comprehensive understanding of these factors is essential to address these challenges and facilitate a smooth transition to a modern and efficient land administration system in Nigeria.

ORGANISED BY



PLATINUM SPONSORS





FIG Working Week 2024

19-24 May

Accra, Ghana

Your World, Our World:
Resilient Environment
and Sustainable
Resource Management
for All

SUSTAINABLE DEVELOPMENT **GOALS**

International Federation of Surveyors supports the Sustainable Development Goals

Commission 7

Cadastre and Land Management

1 NO POVERTY 	2 ZERO HUNGER 	3 GOOD HEALTH AND WELL-BEING 	4 QUALITY EDUCATION 	5 GENDER EQUALITY 	6 CLEAN WATER AND SANITATION 	7 AFFORDABLE AND CLEAN ENERGY 	8 DECENT WORK AND ECONOMIC GROWTH 	9 INDUSTRY, INNOVATION AND INFRASTRUCTURE
10 REDUCED INEQUALITIES 	11 SUSTAINABLE CITIES AND COMMUNITIES 	12 RESPONSIBLE CONSUMPTION AND PRODUCTION 	13 CLIMATE ACTION 	14 LIFE BELOW WATER 	15 LIFE ON LAND 	16 PEACE, JUSTICE AND STRONG INSTITUTIONS 	17 PARTNERSHIPS FOR THE GOALS 	