

FIG

FIG WORKING WEEK 2017

Helsinki Finland

29 May - 2 June 2017

Presented at the FIG Working Week 2017,
May 29 - June 2, 2017 in Helsinki, Finland

How Farmer Can Utilize Drone Mapping?

National Land Survey of Finland
Finnish Geospatial Research Institute

Roope Näsi, Eija Honkavaara, Teemu Hakala, Niko
Viljanen (FGI) and Pirjo Peltonen-Sainio (LUKE)

Surveying the world of tomorrow -
From digitalisation to augmented reality

Organised by



Platinum Sponsors:



esri



Trimble



FIG WORKING WEEK 2017

Surveying the world of tomorrow -

Helsinki Finland 29 May - 2 June 2017

From digitalisation to augmented reality

Introduction

- Remote sensing based on drones (alternative terms: UAV; Unmanned Aerial Vehicle or RPAS; Remotely Piloted Aircraft System) is a rapidly developing field of technology
- Due to technological innovations lightweight and frame format hyperspectral sensors have become available which may be carried by small drones
- Drone based mapping enables to map agricultural lands with very high spatial resolution



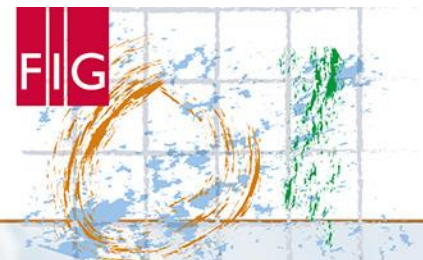


FIG WORKING WEEK 2017

Surveying the world of tomorrow -

From digitalisation to augmented reality

Equipment

- Drone (UAV, RPAS)
 - Payload: 3-4kg, flight time: 15-30 min
 - Sensors
 - FPI based hyperspectral camera (500-900 nm)
 - Off-the-shelf RGB camera (Samsung NX500)
- Ground station



Ground station

Drone and payload



Platinum Sponsors:





FIG WORKING WEEK 2017

Surveying the world of tomorrow -

Helsinki Finland 29 May - 2 June 2017

From digitalisation to augmented reality

Novel FPI-Based spectral cameras – VNIR

- 1. FPI
- Spectral range: 409-973 nm, 36 bands with 10-15 nm FWHM
 - Based on FPI technology (developed by VTT Finland)
 - Changing air gap between two mirrors determines different wavelengths
 - 1010*648 pixels, with of 11 x 11 μm pixel size, no interpolation
 - Focal length 9 mm, f-number 2.8
 - FOV: $\pm 18.5^\circ$ in the flight direction, $\pm 18.5^\circ$ in the cross-flight direction
 - Mass: 720 g without battery



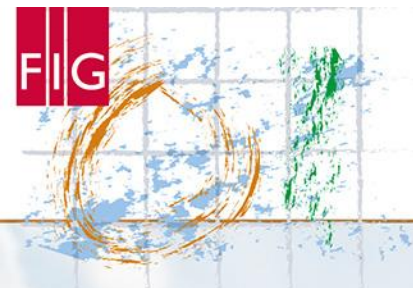


FIG WORKING WEEK 2017

Surveying the world of to
From digitalisation to aug



Drone data capture summer 2016

- 3 different farms
- 8 flight campaigns
 - 34 different flights
 - 16 different parcels
 - (1)-3 times during growing season
- 68 data sets
- Plants
 - grass, wheat (summer and winter), barley, oat, rapeseed and pea

	Farm 1	Farm 2	Farm 3
Flying date	2016-06-02	2016-06-07	2016-06-15
N of flights	3	5	4
N of parcels	5	6	4
Flying date	2016-06-22	2016-06-21	
N of flights	4	6	
N of parcels	5	6	
Flying date	2016-07-21	2016-07-26	
N of flights	4	4	
N of parcels	5	3	
Flying date		2016-03-08	
N of flights		4	
N of parcels		2	



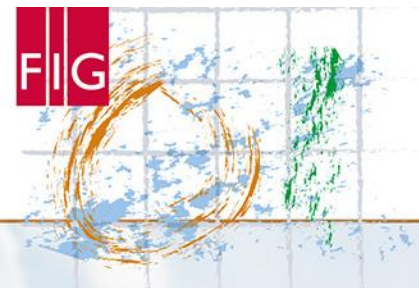


FIG WORKING WEEK 2017

Surveying the world of tomorrow -

Helsinki Finland 29 May - 2 June 2017

From digitalisation to augmented reality

Flight parameters

- Flying height: 140m
- Ground sample distance (GSD) 14 cm for FPI and 3.2 cm for RGB camera
- Flying speed: 4m/s
- Overlaps:
 - FPI: 90% forward and 65% side overlap
 - RGB 93% forward and 75% side overlap



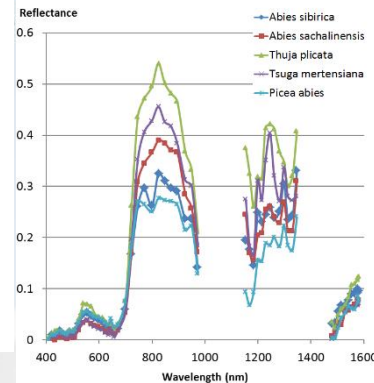
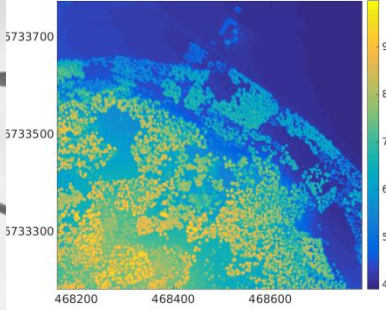
Platinum Sponsors:



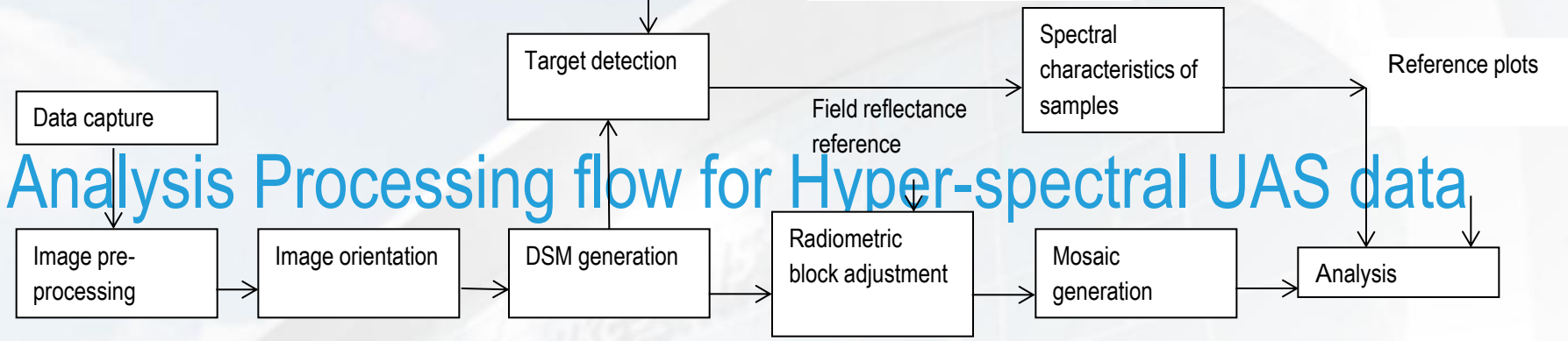
FIG WORKING WEEK 2017

Surveying the world of tomorrow -

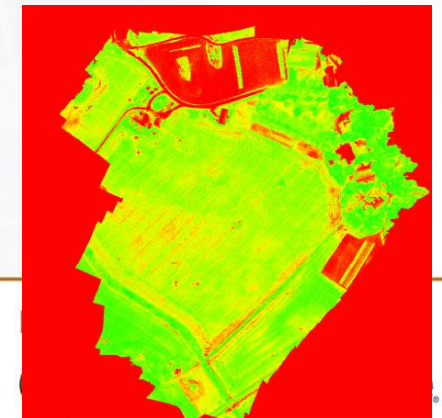
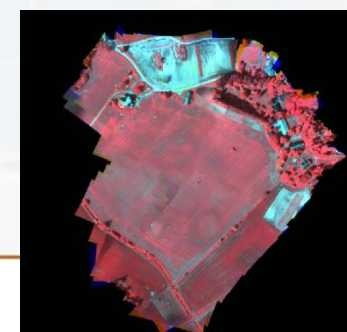
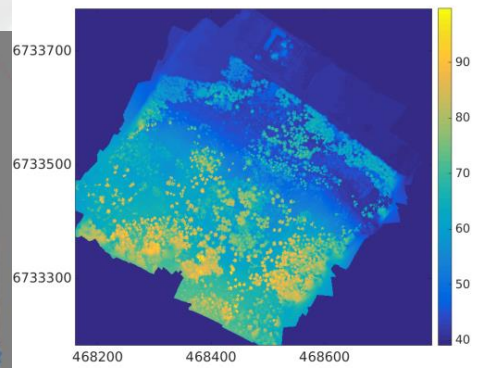
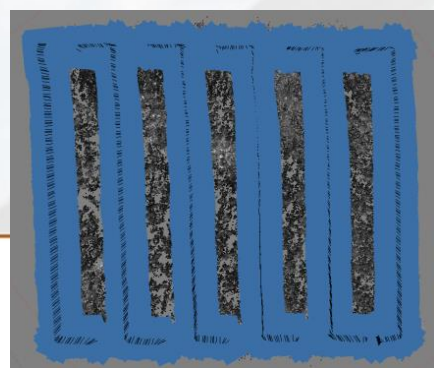
Helsinki Finland 29 May - 2 June 2017



ALS DTM



Analysis Processing flow for Hyper-spectral UAS data



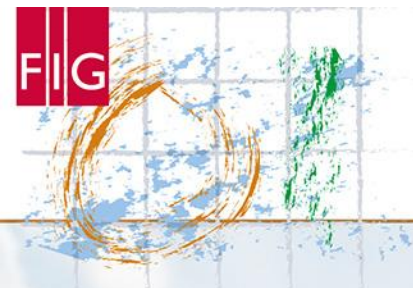


FIG WORKING WEEK 2017

Surveying the world of tomorrow -

Helsinki Finland 29 May - 2 June 2017

From digitalisation to augmented reality

Examples of RGB mosaic data



Parts of orthomosaics where farmer can identify weeds



Parts of orthomosaics where the farmer can identify areas of ice encasements (left) and old subsurface drainages (right)



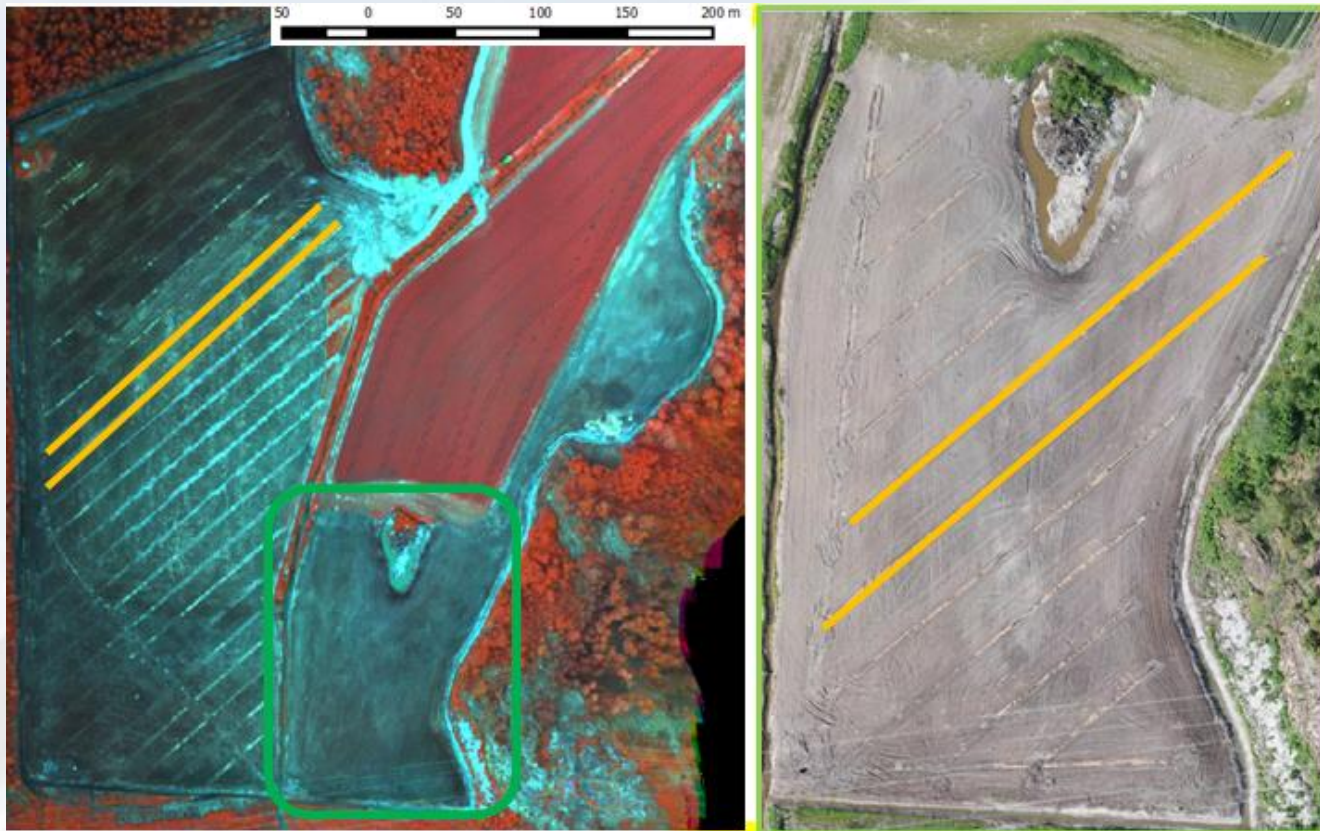
FIG WORKING WEEK 2017

Surveying the world of tomorrow -

Helsinki Finland 29 May - 2 June 2017

From digitalisation to augmented reality

Documentation of sub-surface drainages



Platinum Sponsors:





FIG WORKING WEEK 2017

Surveying the world of tomorrow -

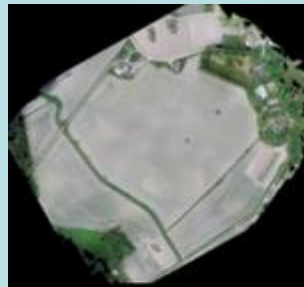
Helsinki Finland 29 May - 2 June 2017

From digitalisation to augmented reality

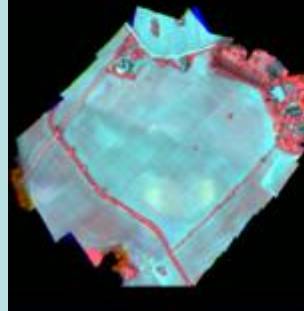
Drone data from pea parcel

- Pea field
- Time serie collection during growing season
- Anomalies visible espacially in last data set
 - Rain and topography

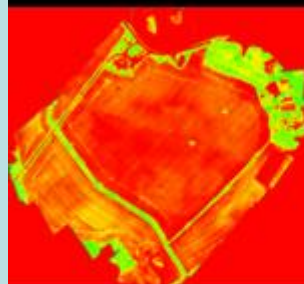
**RGB
mosaic**



**FPI
Spectral
mosaic**



NDVI map



**Average
spectra**

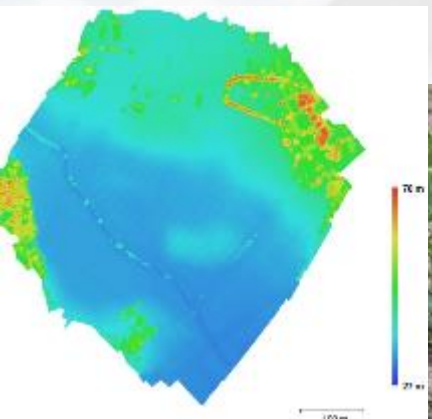
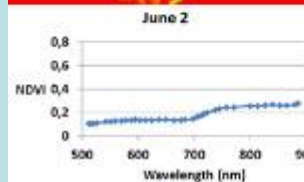




FIG WORKING WEEK 2017

Surveying the world of tomorrow -

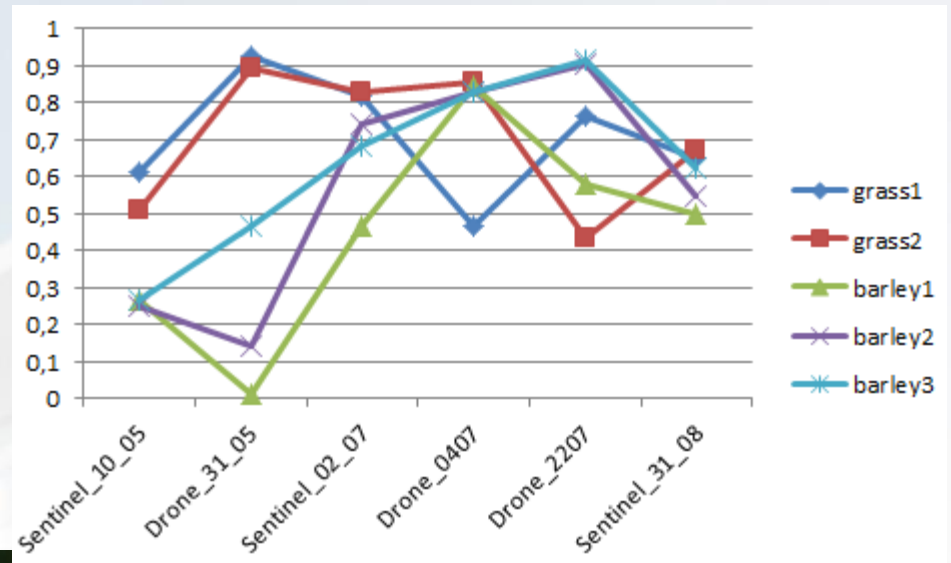
Helsinki Finland 29 May - 2 June 2017

From digitalisation to augmented reality

Comparison to satellite data

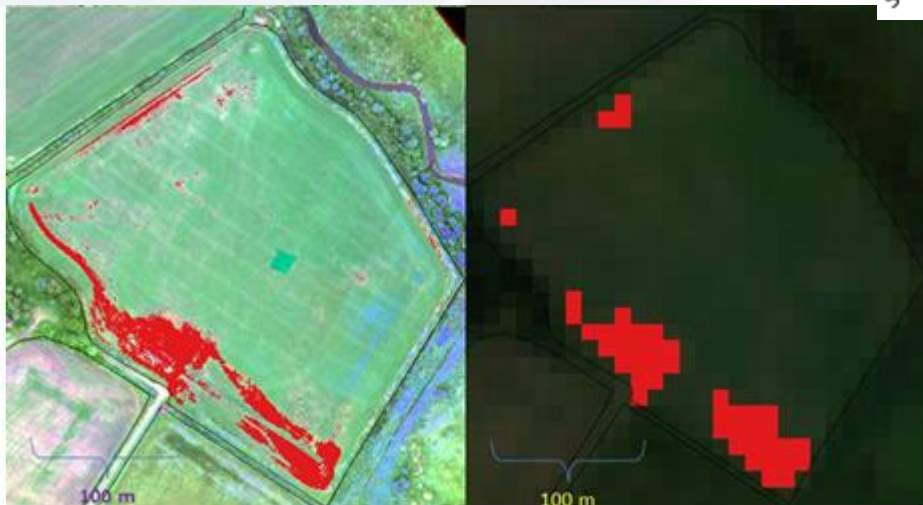
- Sentinel-2 data were collected from same area
 - GSD 10m (drones 0.03-0.20m)

NDVI time serie was calculated
-parcel based statistics are compatible



Drone

Satellite



Anomaly detection:
-Detected areas are quite similar

Platinum Sponsors:



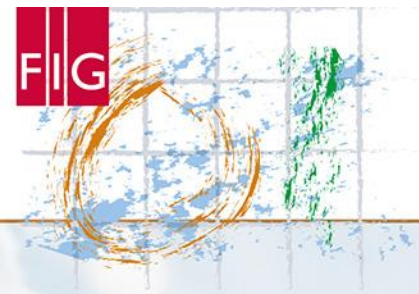


FIG WORKING WEEK 2017

Surveying the world of tomorrow -

Helsinki Finland 29 May - 2 June 2017

From digitalisation to augmented reality

Conclusion and outlook

- Visual analysis of drone based orthomosaics can already provide valuable information for farmers
- Computational analyses are independent of human knowledge and necessary for automatic methods
- The rapidly evolving drone remote sensing tools provides new possibilities to automate and accelerate the remote sensing procedures for precision agriculture
- In the future, even near real-time response is expected
- Novel systems have a great potential to support optimization of land use and farming practices



Platinum Sponsors:



esri



Trimble

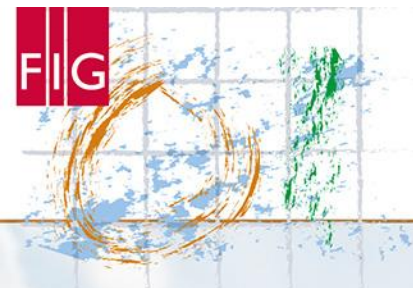


FIG WORKING WEEK 2017

Surveying the world of tomorrow -

Helsinki Finland 29 May - 2 June 2017

From digitalisation to augmented reality

More information

roope.nasi@nls.fi

eija.honkavaara@nls.fi

teemu.hakala@nls.fi

niko.viljanen@nls.fi

pirjo.peltonen-sainio@luke.fi



Home



dronefinland

@dronefinland



OPAL·Life



Platinum Sponsors:



esri



Trimble