

Presented at the FIG Working Week 2016,
May 2-6, 2016 in Christchurch, New Zealand



FIG Working Week 2016

CHRISTCHURCH, NEW ZEALAND 2-6 MAY 2016

Recovery

from disaster

Organised by



Platinum Partners



Diamond Partner





FIG Working Week 2016

CHRISTCHURCH, NEW ZEALAND 2-6 MAY 2016

Recovery

from disaster

FULTON HOGAN MOBILE APP MOBILISING A REMOTE WORKFORCE

JANA PFEFFEROVA



FIG Working Week 2016

CHRISTCHURCH, NEW ZEALAND 2-6 MAY 2016

Recovery

from disaster

FULTON HOGAN

- + Since 1933
- + New Zealand, Australia and South Pacific
- + Transport and Civil Infrastructure
 - Road Maintenance
 - Traffic Management
 - Civil Construction
 - Water Infrastructure

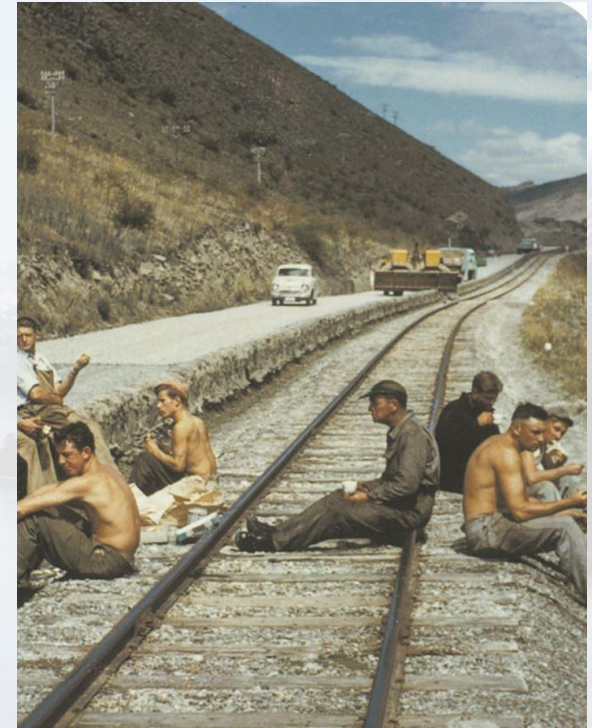




FIG Working Week 2016

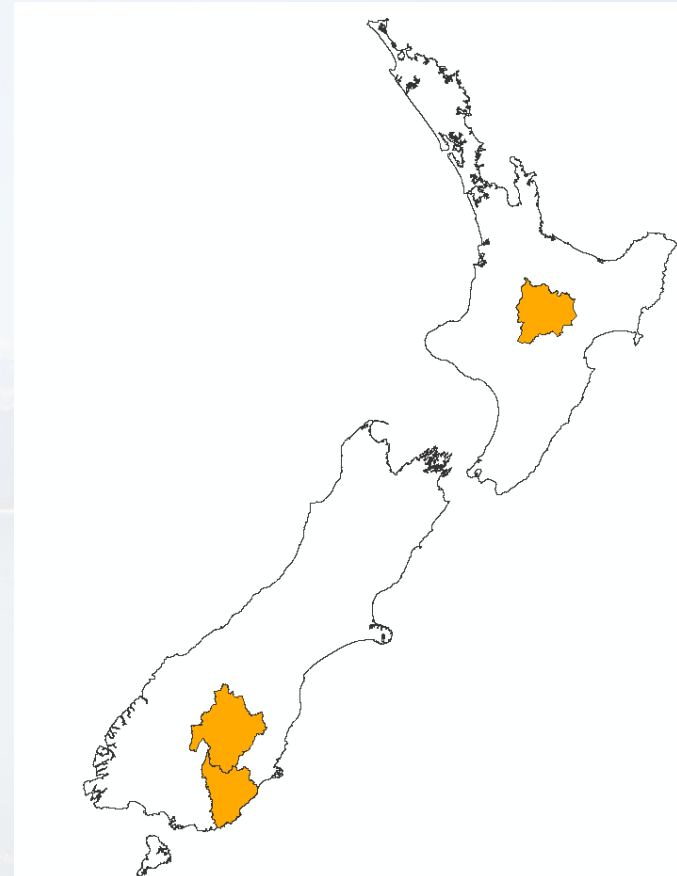
CHRISTCHURCH, NEW ZEALAND 2-6 MAY 2016

Recovery

from disaster

FULTON HOGAN AND GIS

- Clutha
- Central Otago
- Taupo





GIS AT FULTON HOGAN

- View Data
- Search Location
- Red Marking
- Provide Reports
- Share Data

+ Disconnected Environment





FIG Working Week 2016

CHRISTCHURCH, NEW ZEALAND 2-6 MAY 2016

Recovery

from disaster

PREVIOUS WORKFLOW

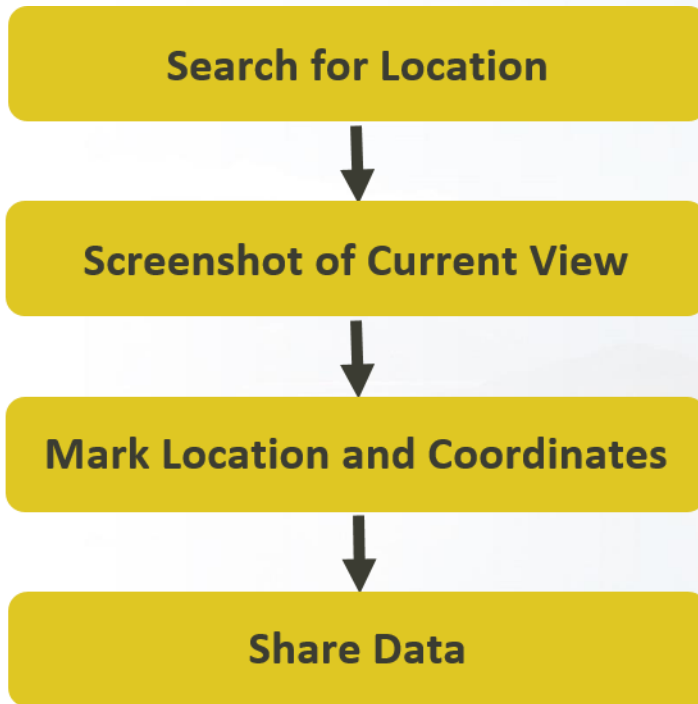




FIG Working Week 2016

CHRISTCHURCH, NEW ZEALAND 2-6 MAY 2016

Recovery

from disaster

PREVIOUS WORKFLOW

Search for Location

Screenshot of Current View

Mark Location and Coordinates

Share Data

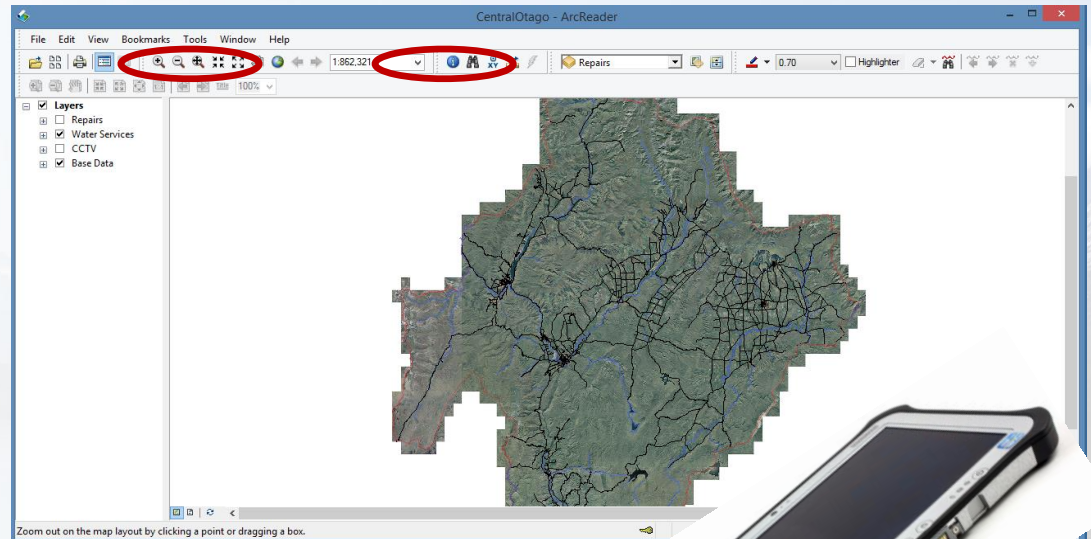




FIG Working Week 2016

CHRISTCHURCH, NEW ZEALAND 2-6 MAY 2016

Recovery

from disaster

PREVIOUS WORKFLOW

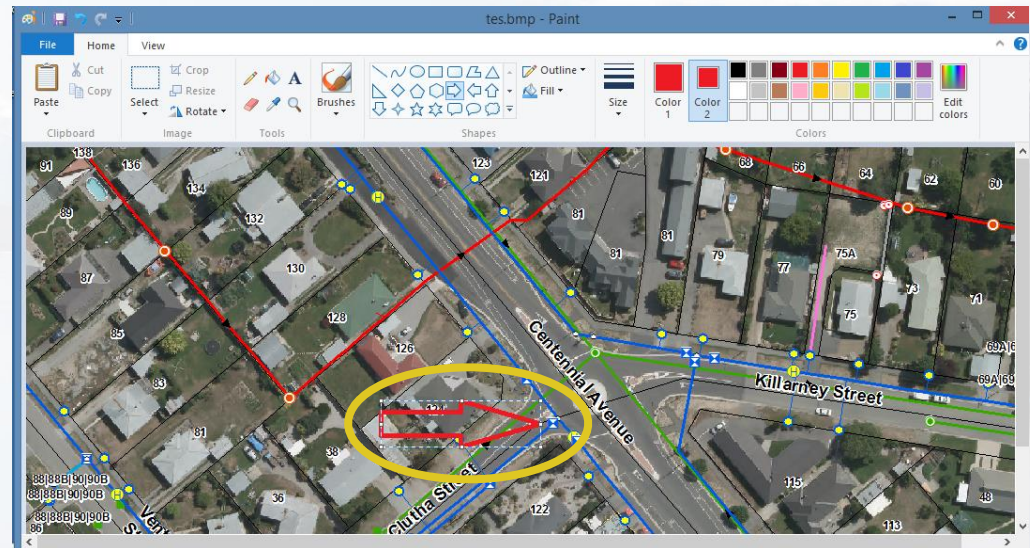
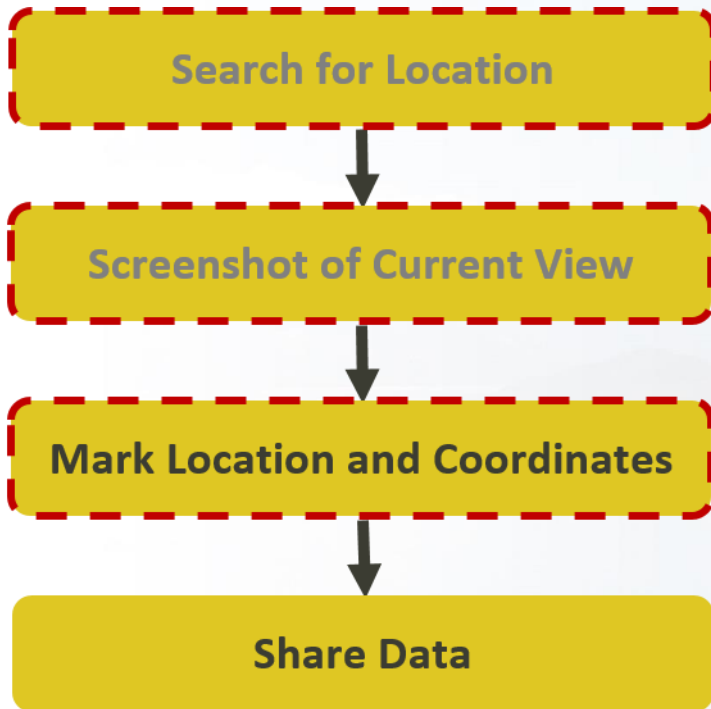




FIG Working Week 2016

CHRISTCHURCH, NEW ZEALAND 2-6 MAY 2016

Recovery

from disaster

PREVIOUS WORKFLOW

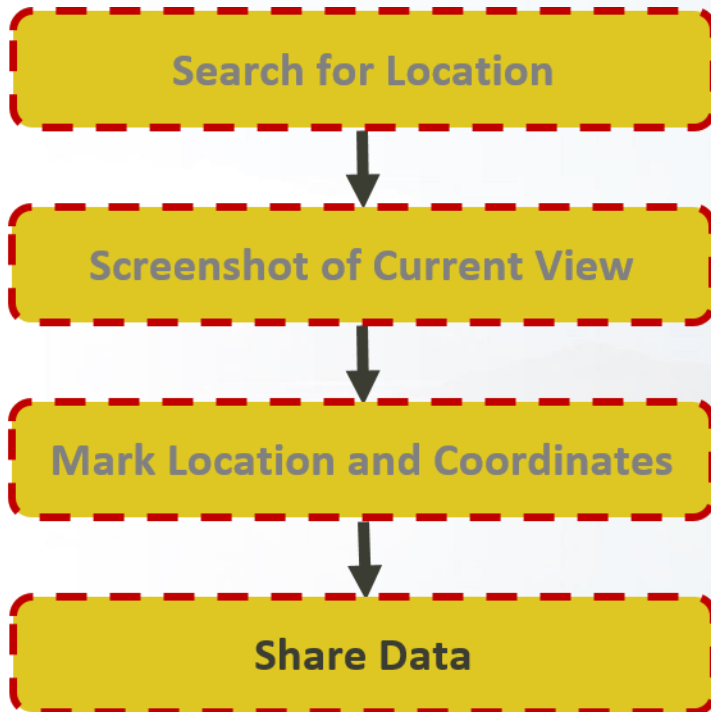




FIG Working Week 2016

CHRISTCHURCH, NEW ZEALAND 2-6 MAY 2016

Recovery

from disaster

PREVIOUS WORKFLOW

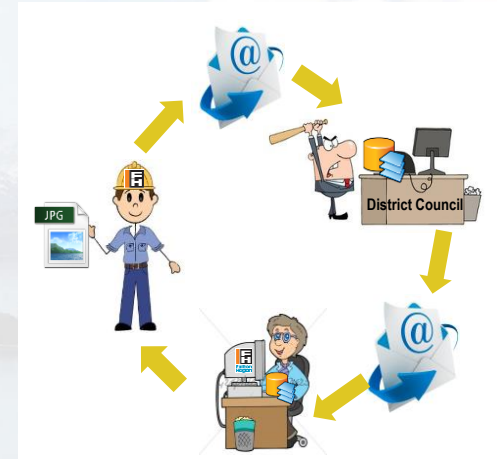
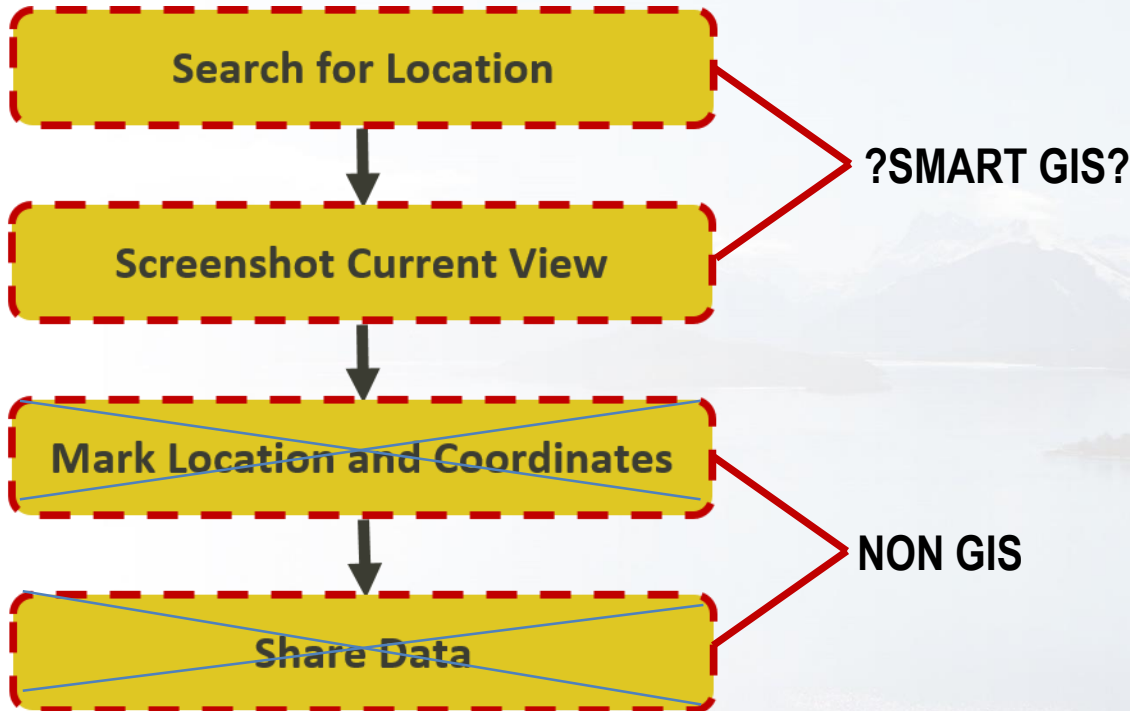




FIG Working Week 2016

CHRISTCHURCH, NEW ZEALAND 2-6 MAY 2016

Recovery

from disaster

SMARTER SOLUTION

+ Requirements

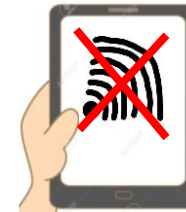
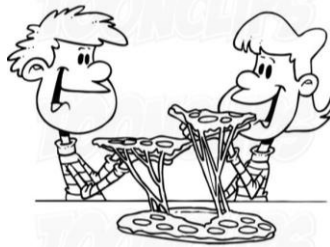
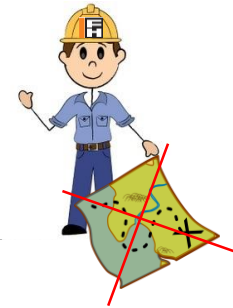




FIG Working Week 2016

CHRISTCHURCH, NEW ZEALAND 2-6 MAY 2016

Recovery

from disaster

MOBILE MAPPING APP

- + ArcGIS Runtime for .NET
- + Windows Platform
- + #C
- + Microsoft Visual Studio

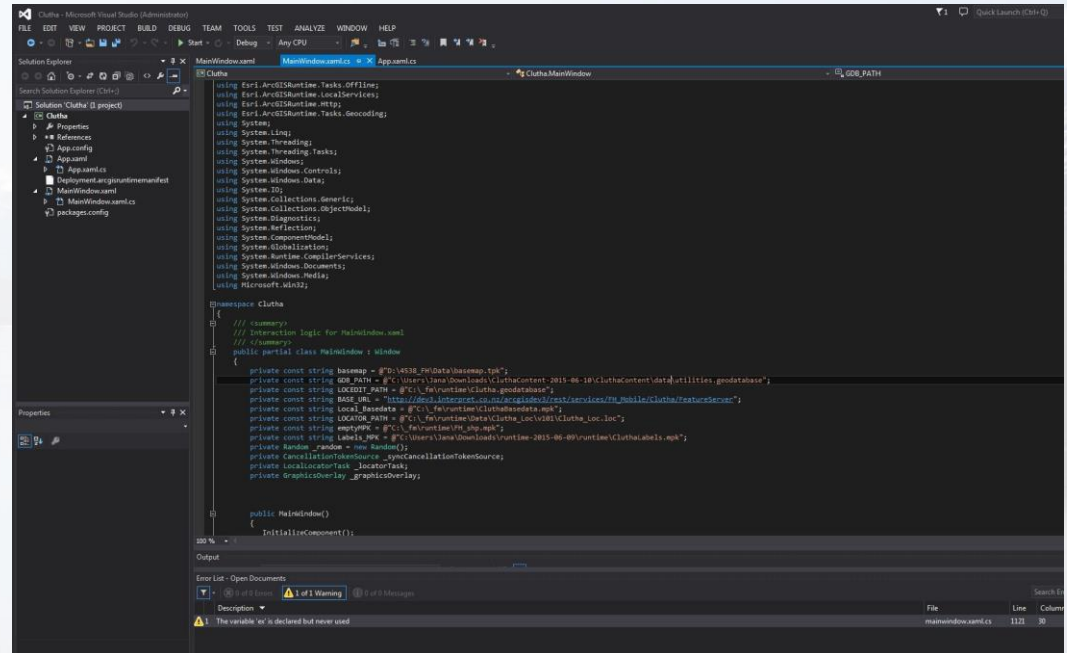




FIG Working Week 2016

CHRISTCHURCH, NEW ZEALAND 2-6 MAY 2016

Recovery

from disaster

RUNTIME WORKFLOW





FIG Working Week 2016

CHRISTCHURCH, NEW ZEALAND 2-6 MAY 2016

Recovery

from disaster

RUNTIME WORKFLOW

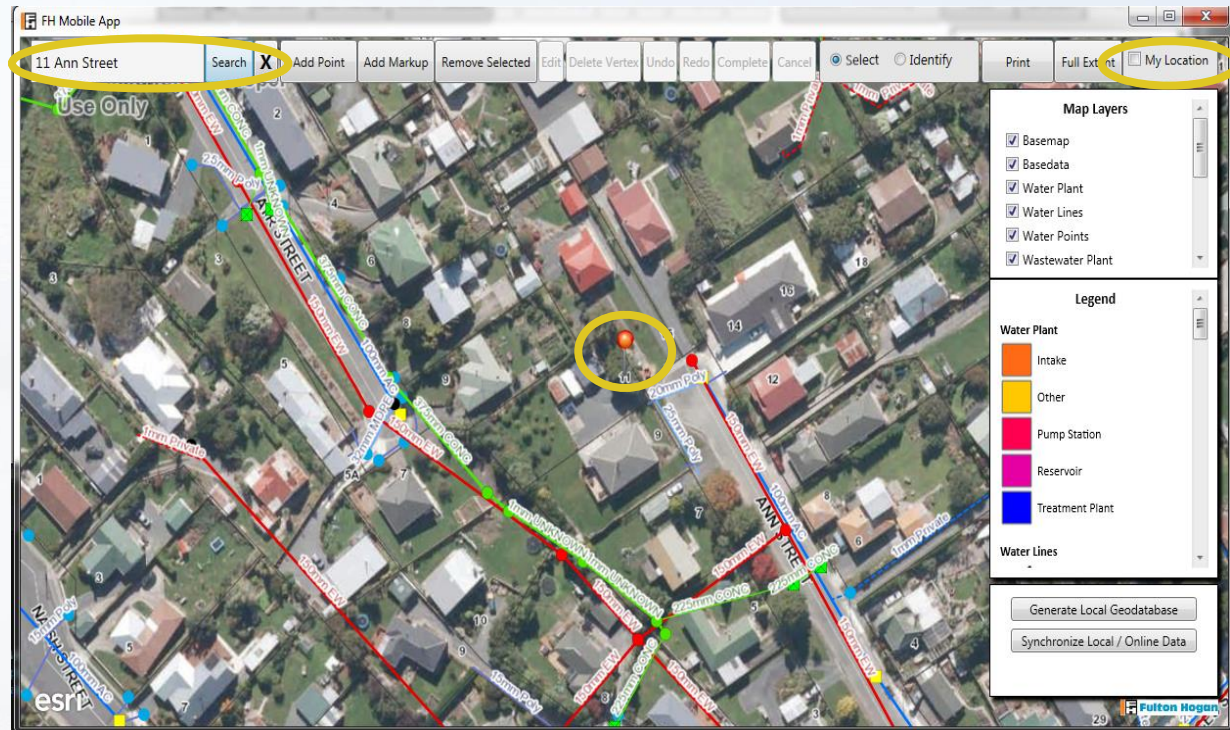




FIG Working Week 2016

CHRISTCHURCH, NEW ZEALAND 2-6 MAY 2016

Recovery

from disaster

RUNTIME WORKFLOW

+ Identify





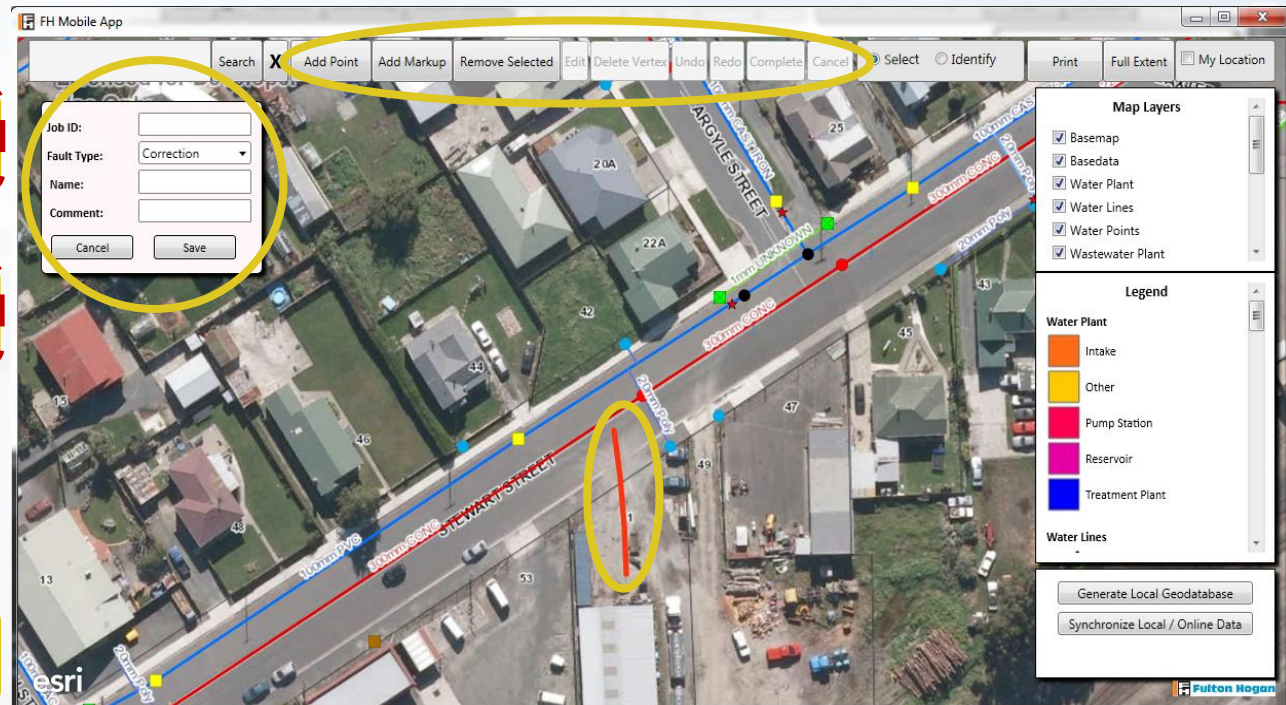
FIG Working Week 2016

CHRISTCHURCH, NEW ZEALAND 2-6 MAY 2016

Recovery

from disaster

RUNTIME WORKFLOW



Platinum Partners:



Diamond Partner





FIG Working Week 2016

CHRISTCHURCH, NEW ZEALAND 2-6 MAY 2016

Recovery

from disaster

RUNTIME WORKFLOW

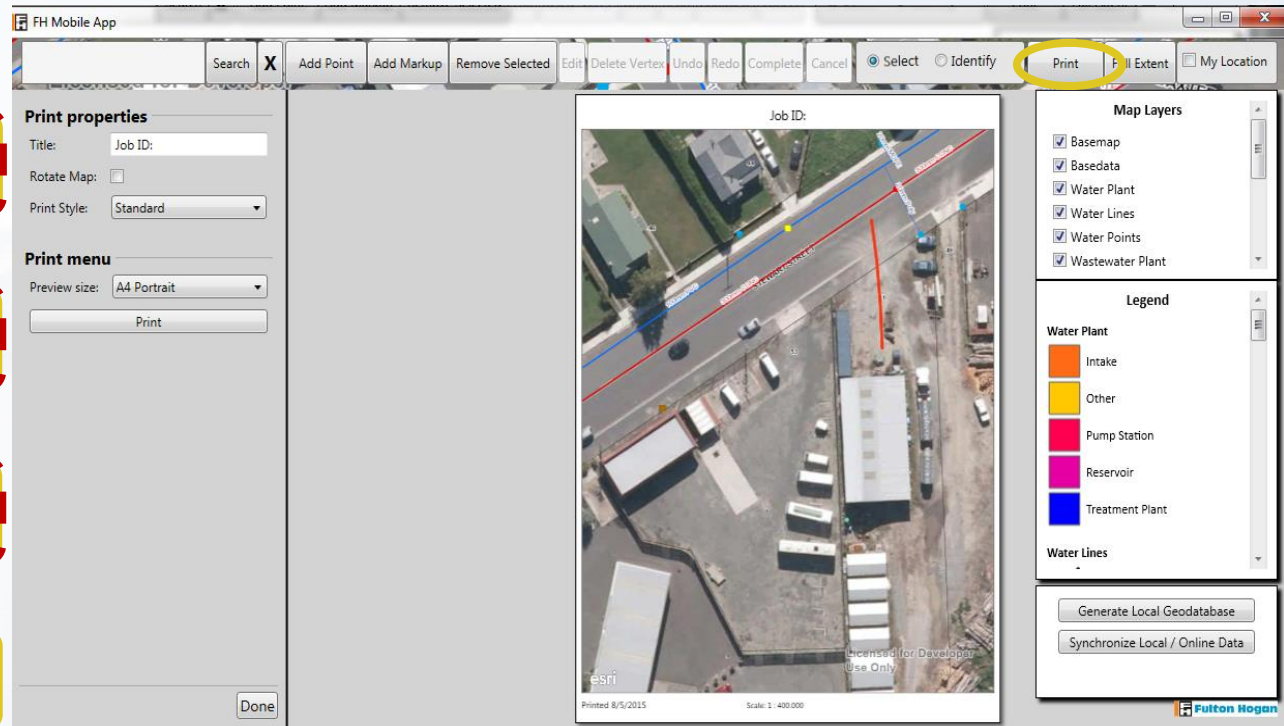




FIG Working Week 2016

CHRISTCHURCH, NEW ZEALAND 2-6 MAY 2016

Recovery

from disaster

RUNTIME WORKFLOW

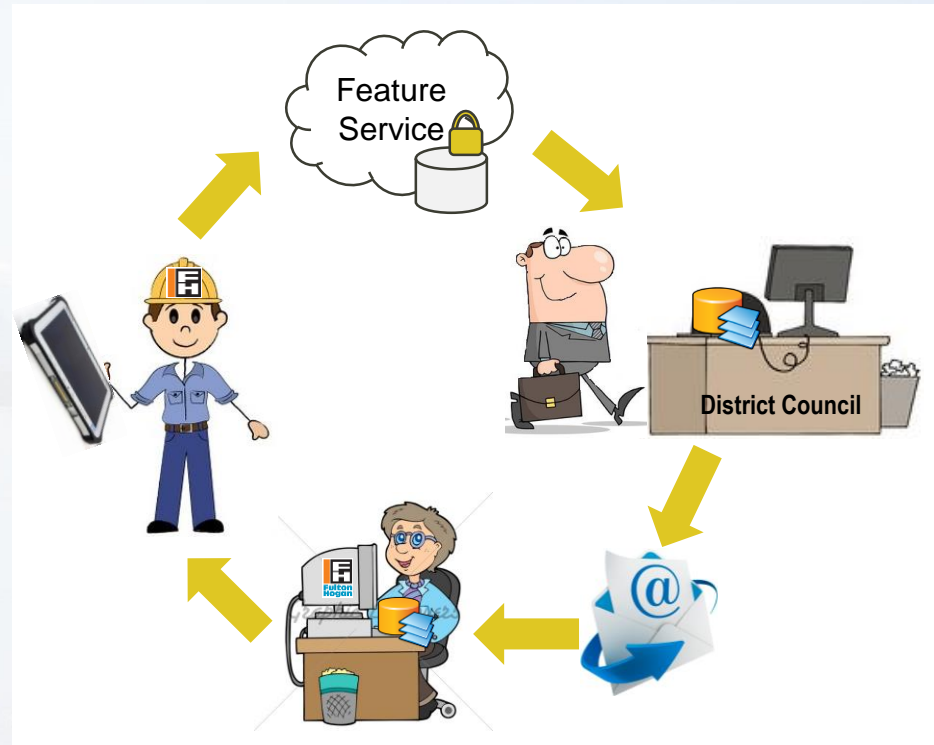




FIG Working Week 2016

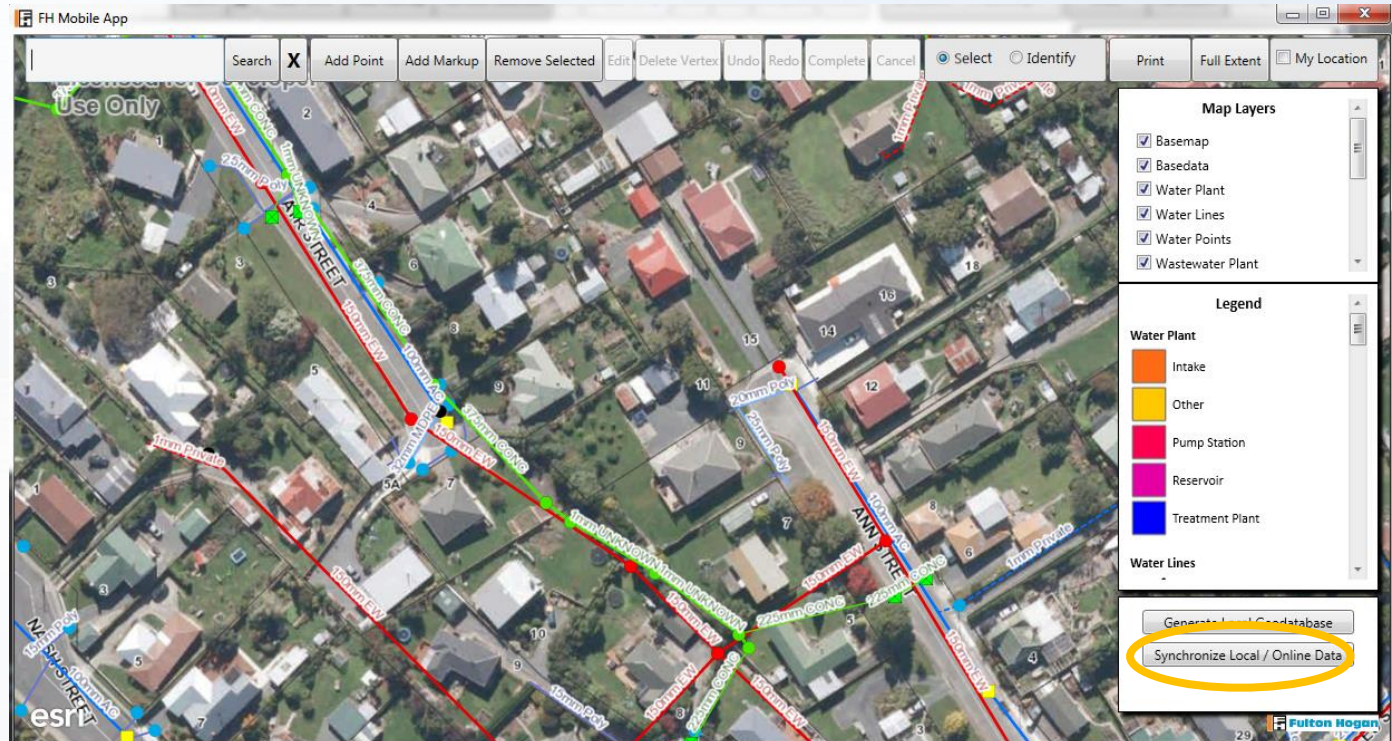
CHRISTCHURCH, NEW ZEALAND 2-6 MAY 2016

Recovery

from disaster

RUNTIME WORKFLOW

+ Share/Sync



Platinum Partners:



Diamond Partner





FIG Working Week 2016

CHRISTCHURCH, NEW ZEALAND 2-6 MAY 2016

Recovery

from disaster

RUNTIME WORKFLOW

+ Share

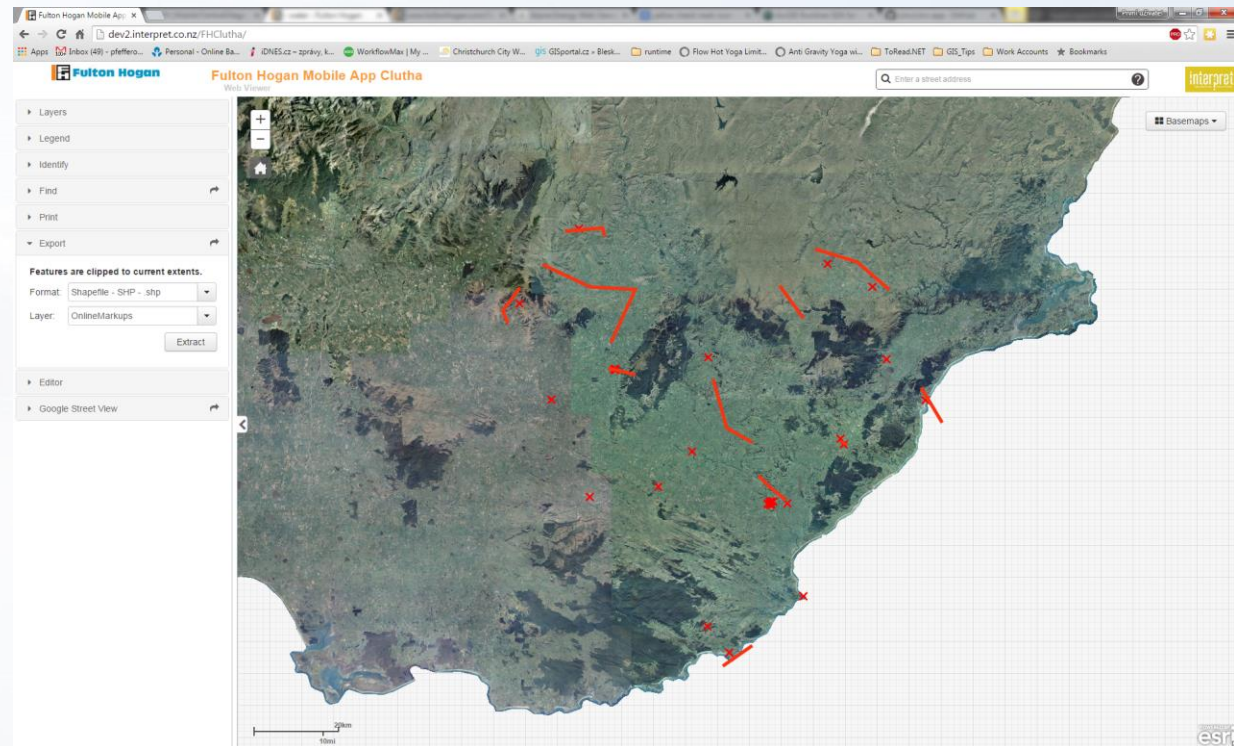




FIG Working Week 2016

CHRISTCHURCH, NEW ZEALAND 2-6 MAY 2016

Recovery

from disaster

COMPARISON

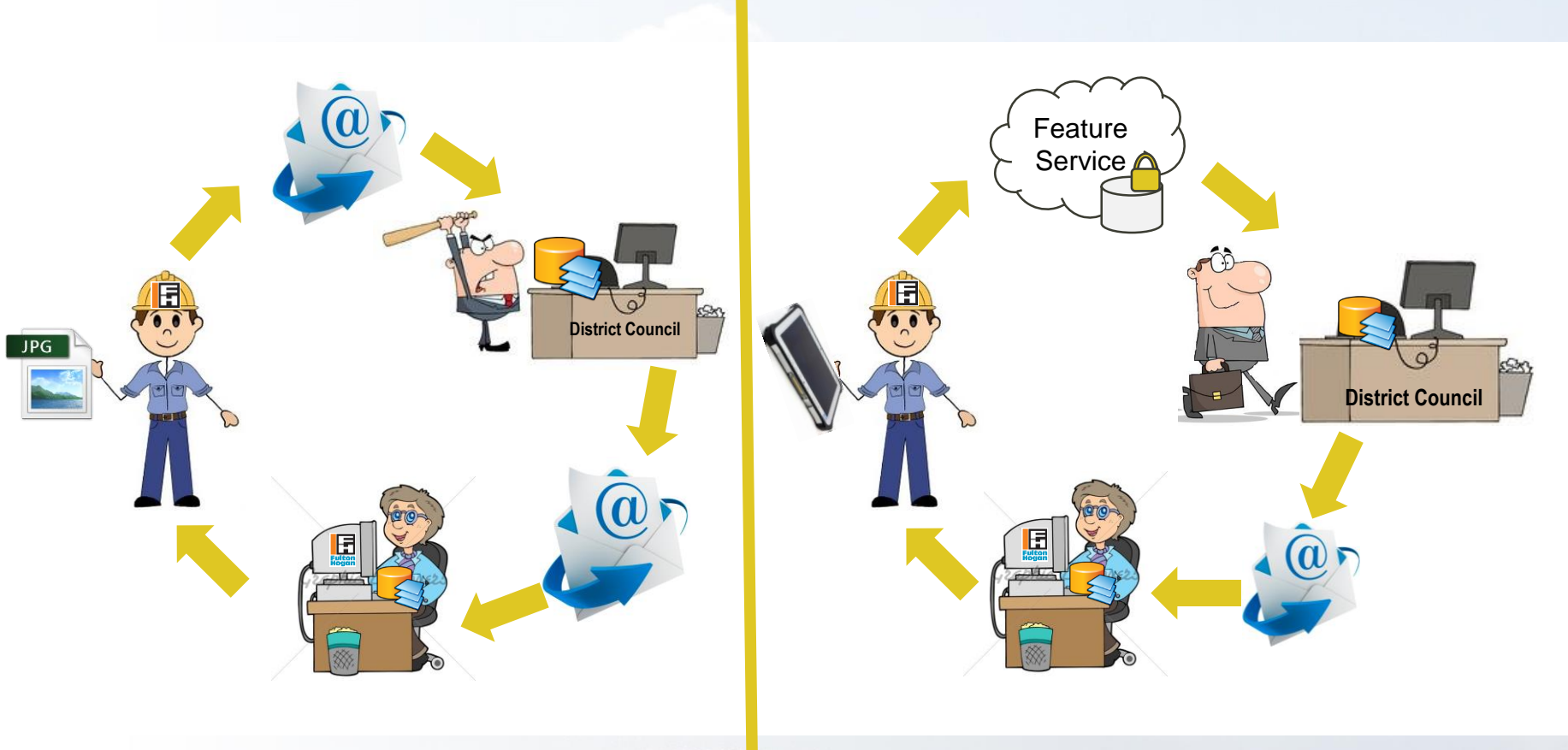




FIG Working Week 2016

CHRISTCHURCH, NEW ZEALAND 2-6 MAY 2016

Recovery

from disaster

RUNTIME WORKFLOW

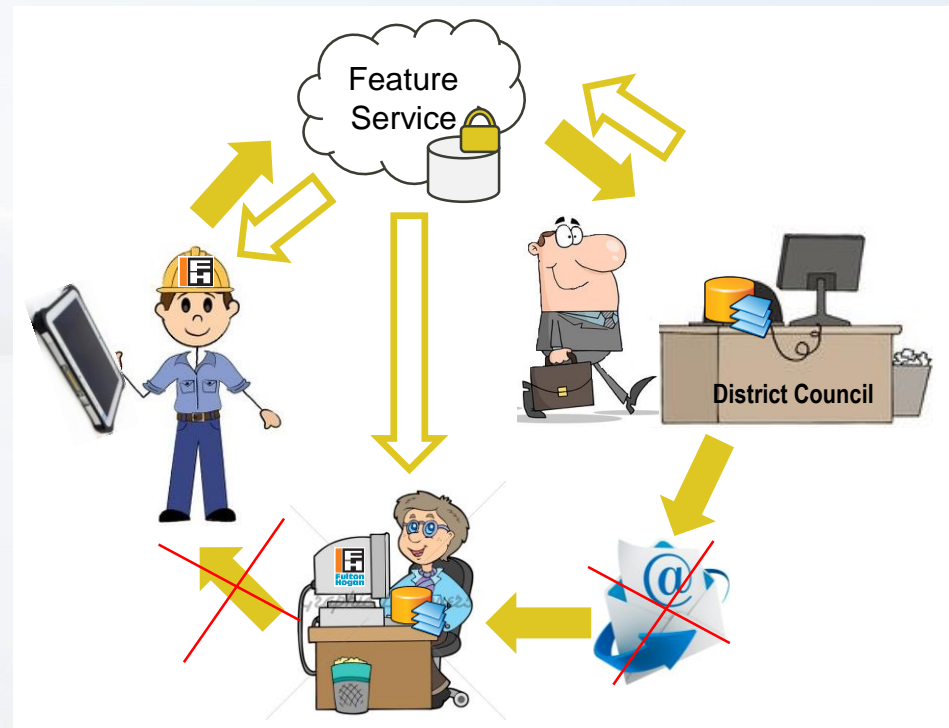




FIG Working Week 2016

CHRISTCHURCH, NEW ZEALAND 2-6 MAY 2016

Recovery

from disaster

Technology behind

- + Basemaps
 - TPK
- + Basedata
 - MPK
- + Geocoder
 - Composite Locator
- + Operational Data
 - Runtime Geodatabase
- + Editable Data
 - Runtime Geodatabase

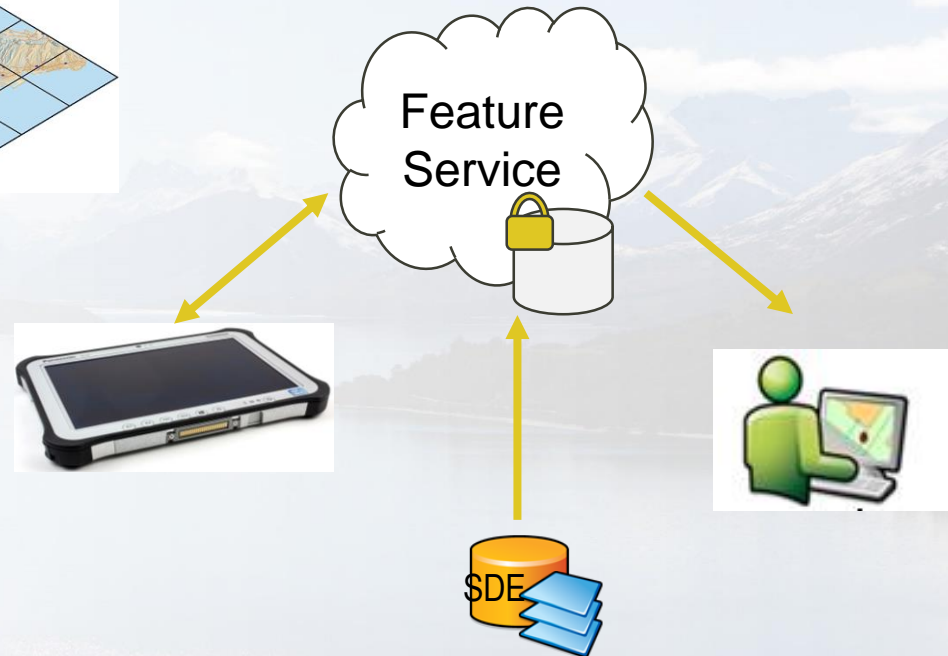
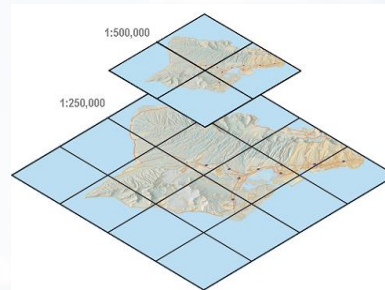




FIG Working Week 2016

CHRISTCHURCH, NEW ZEALAND 2-6 MAY 2016

Recovery

from disaster

Summary

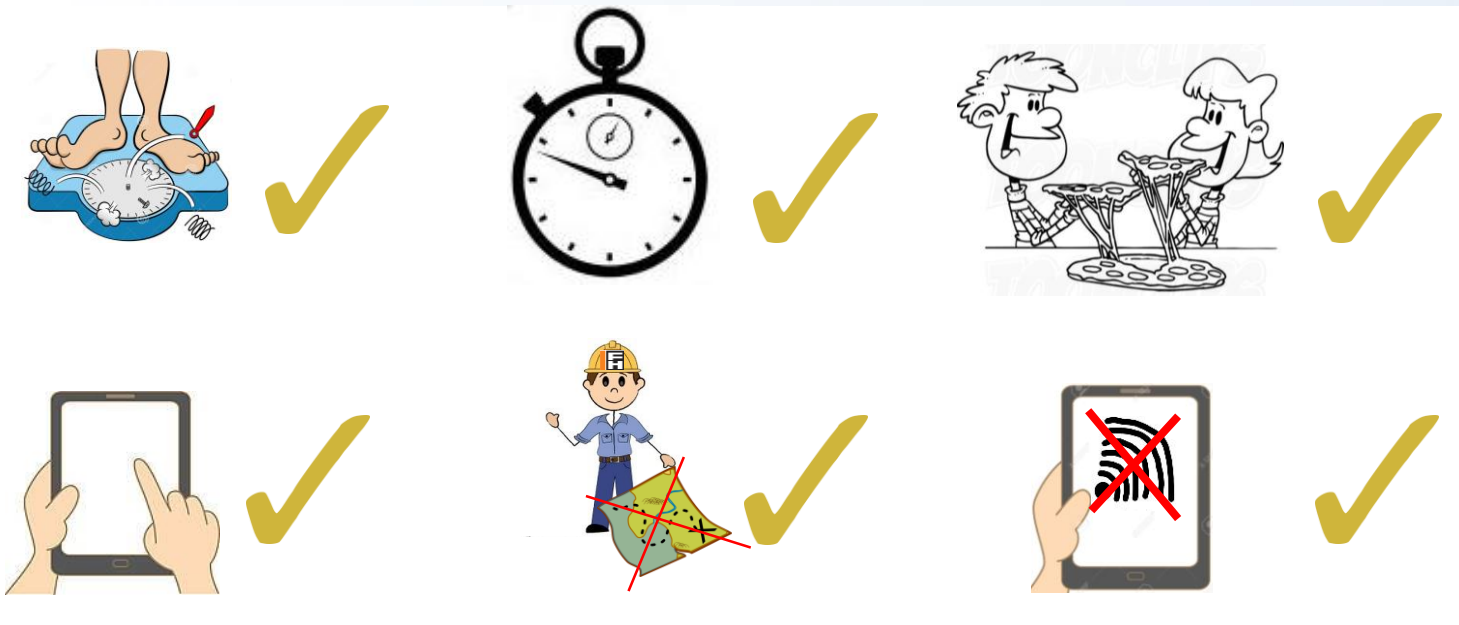




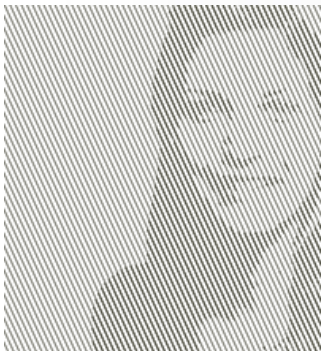
FIG Working Week 2016

CHRISTCHURCH, NEW ZEALAND 2-6 MAY 2016

Recovery

from disaster

ANY QUESTIONS?



JANA PFEFFEROVA

CONSULTANT

T: +64(0)3 367 9075

E: jana.pfefferova@interpret.co.nz



Platinum Partners:



Diamond Partner

