

the power of
where
drives NZ's success



**Presented at the FIG Working Week 2016,
May 2-6, 2016 in Christchurch, New Zealand**

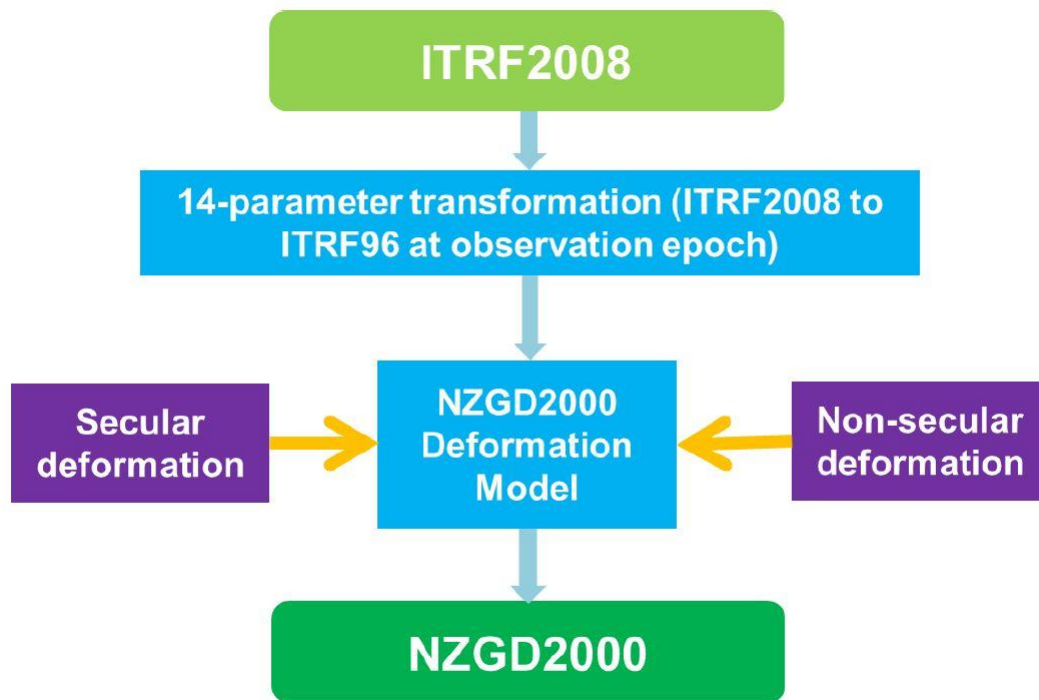


Aligning the New Zealand National Datum with the International Terrestrial Reference Frame in the face of tectonic deformation

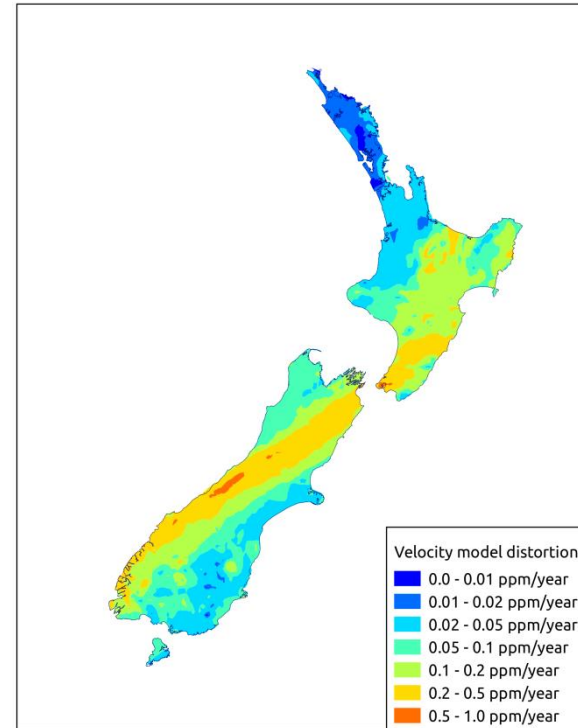
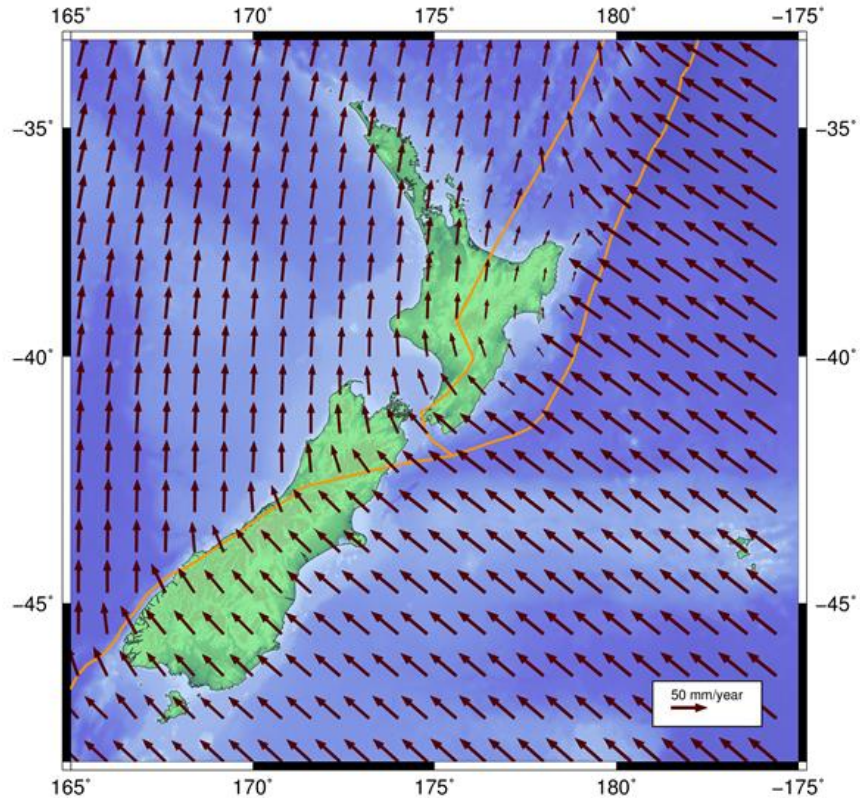
Chris Crook, Dionne Hansen, Paula Gentle
National Geodetic Office, LINZ



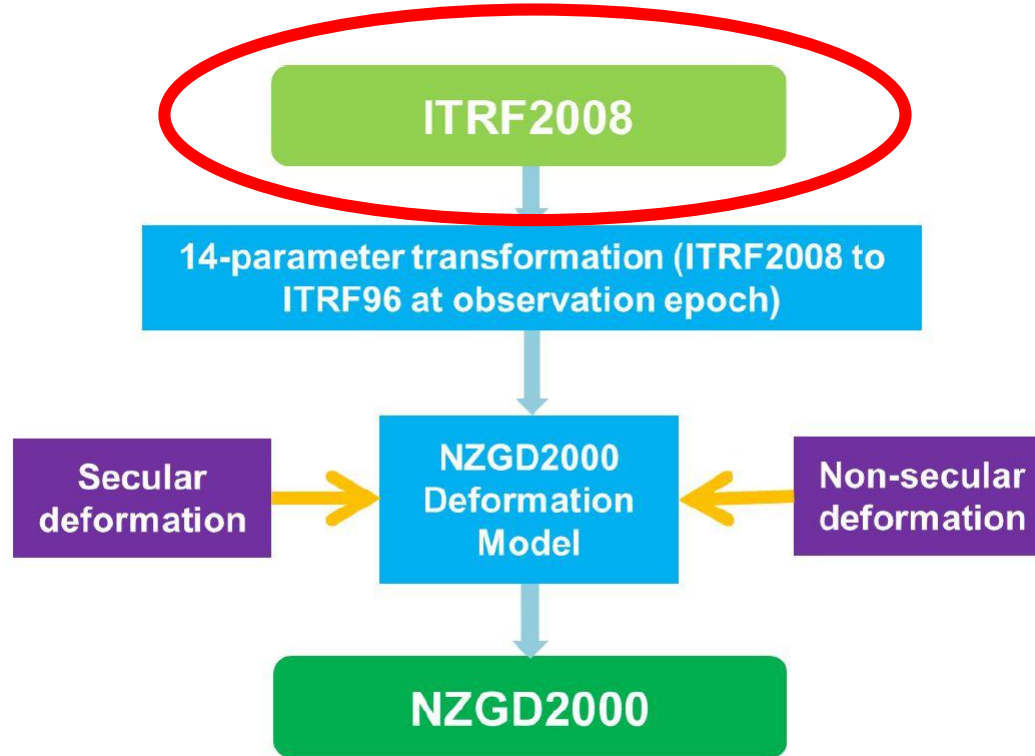
NZGD2000 – “plates-fixed” datum



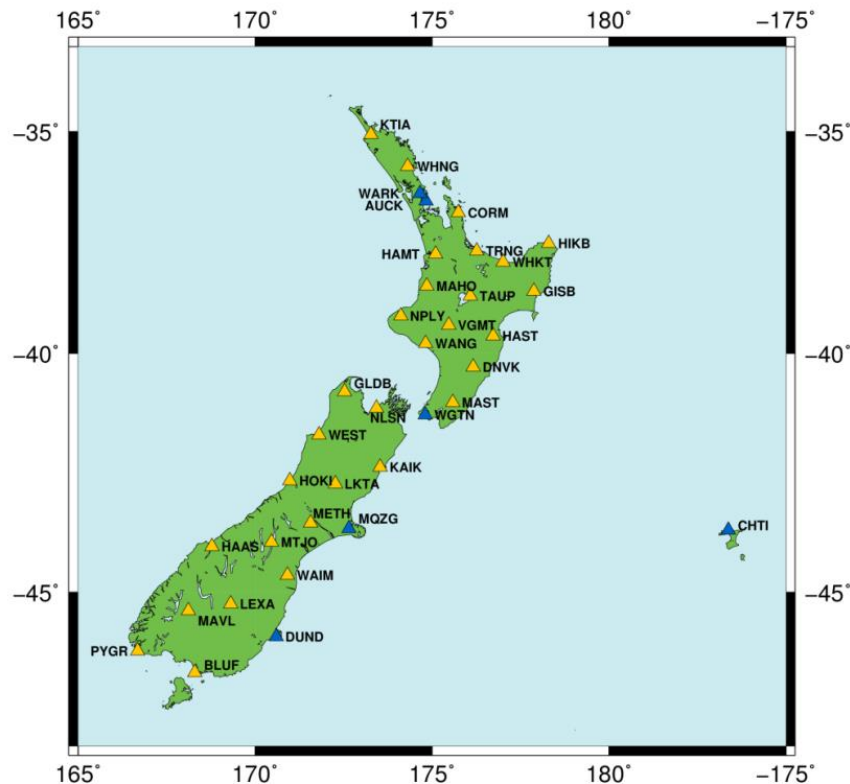
The secular deformation model



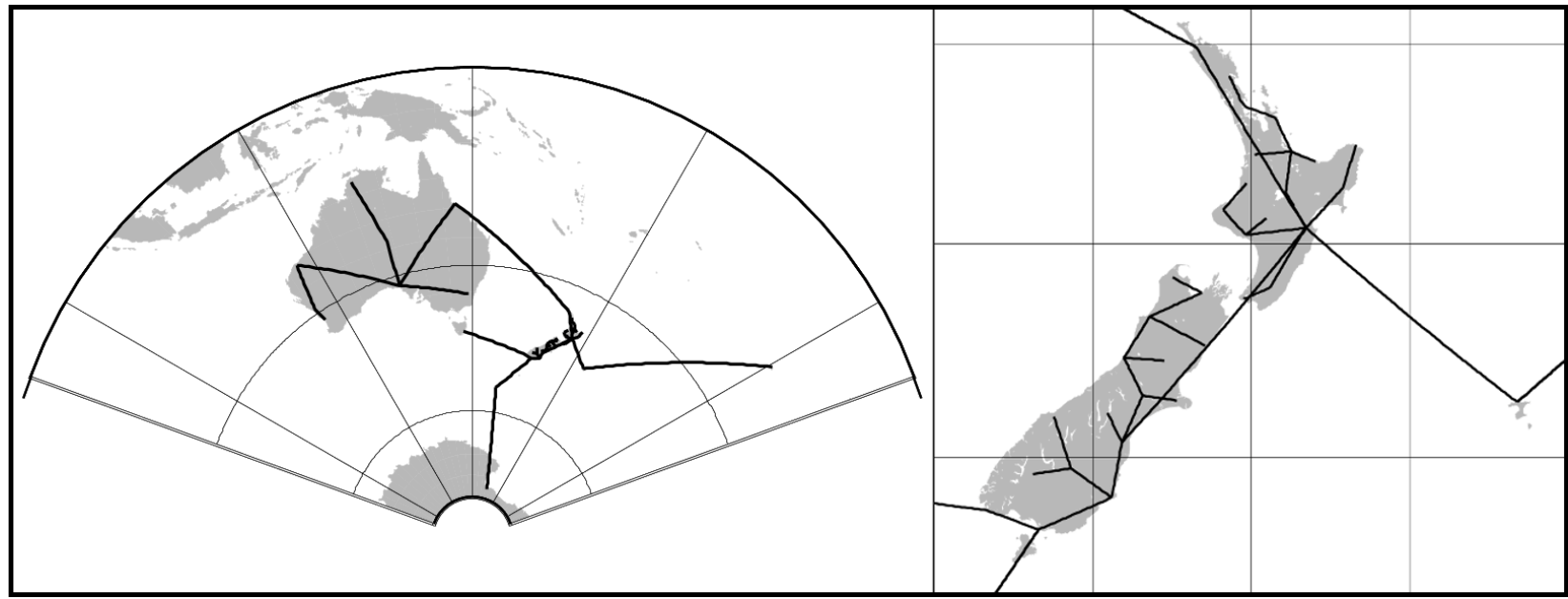
NZGD2000 – “plates-fixed” datum



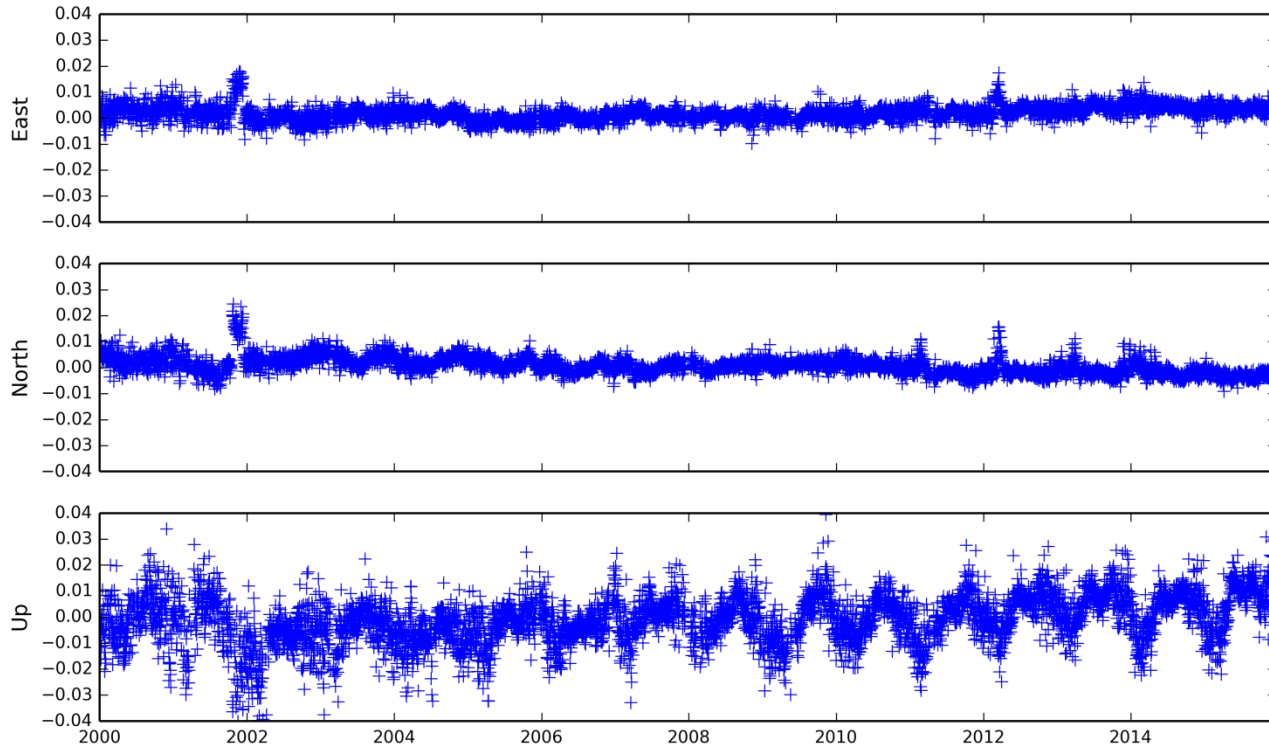
PositionNZ CORS network



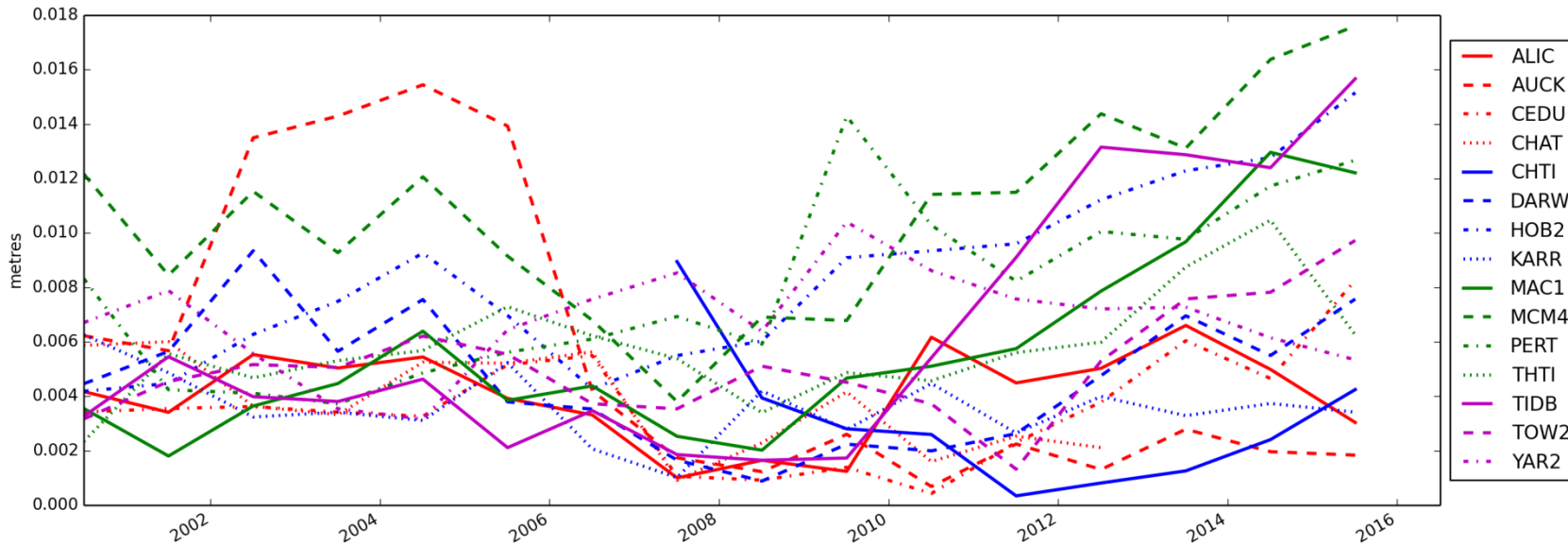
Daily ITRF2008 solution



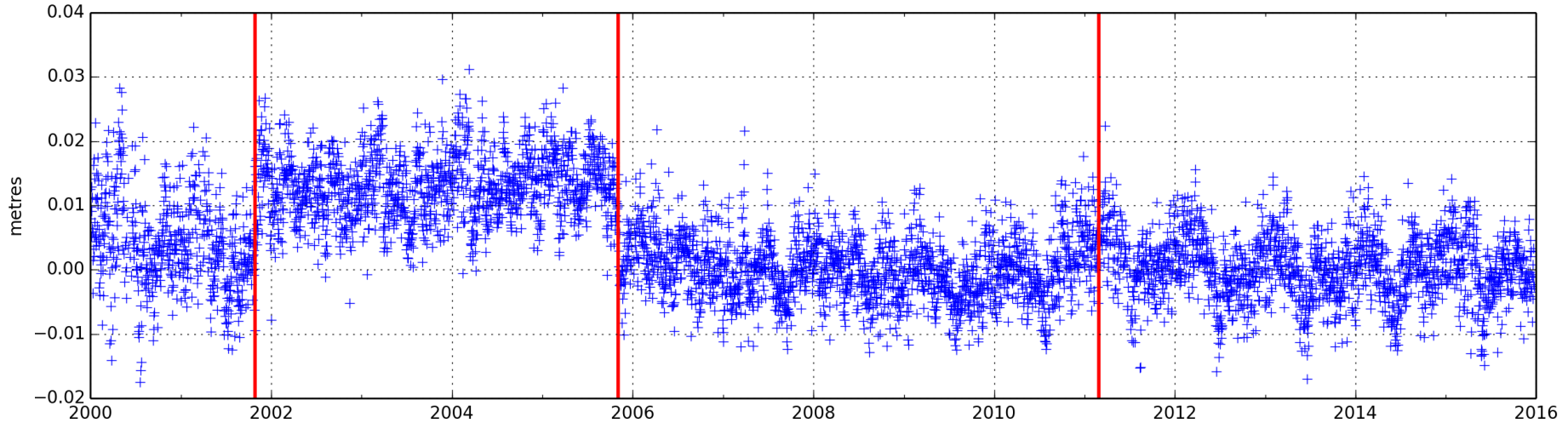
Example time series (Darwin)



Mean annual residual errors



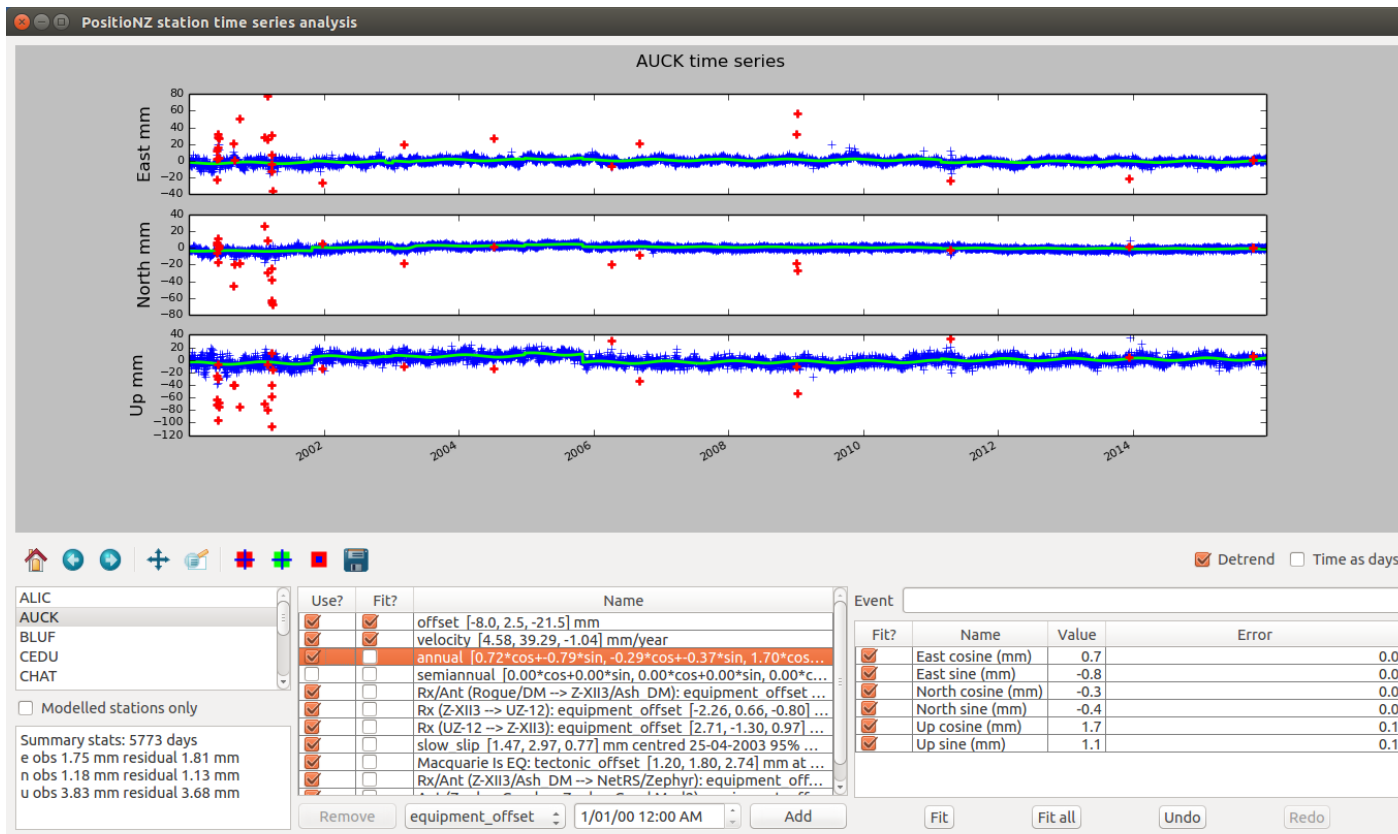
Antenna change at AUCK



Representing time series

- Monthly stacking
- Station coordinate model
 - Velocity
 - step functions
 - post seismic deformation
 - Slow slip events
- NZGD2000 coordinate + deformation model

Station coordinate model

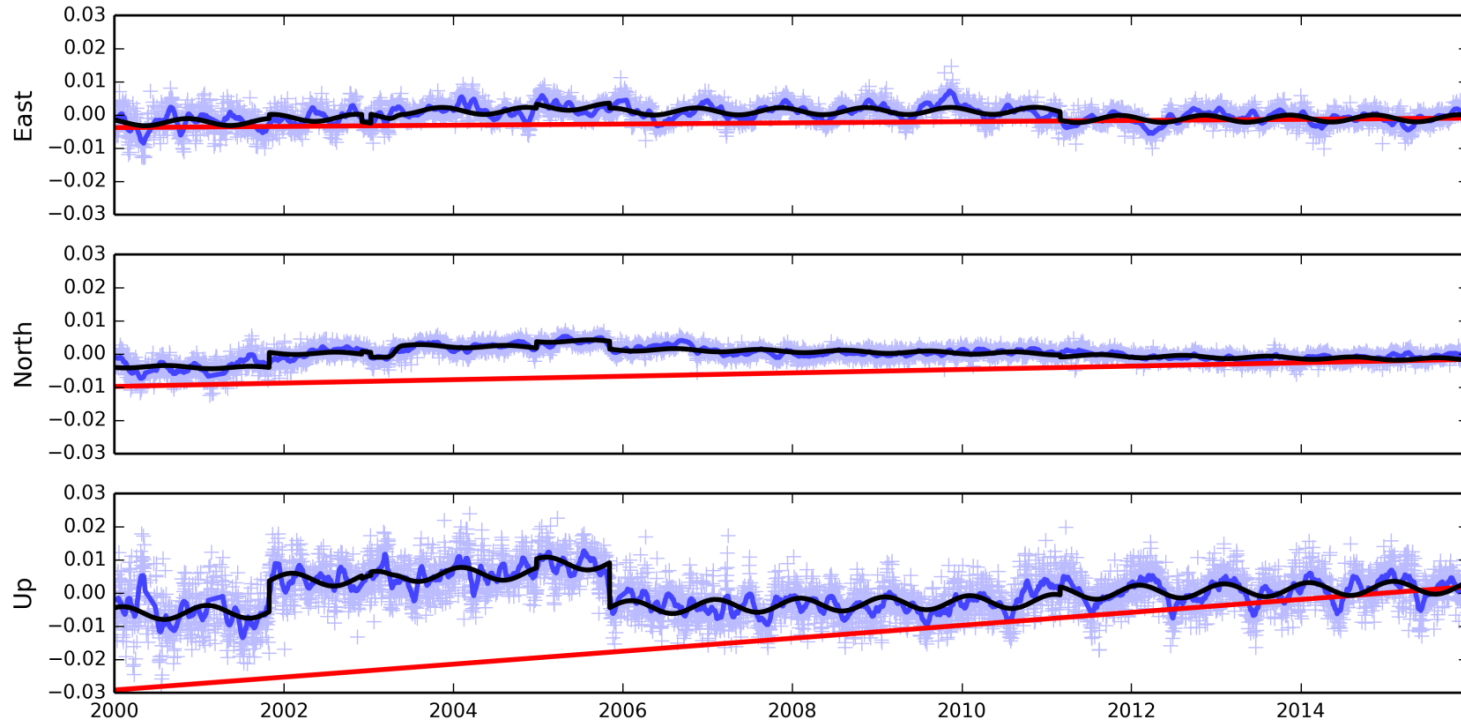


Model fitted successfully

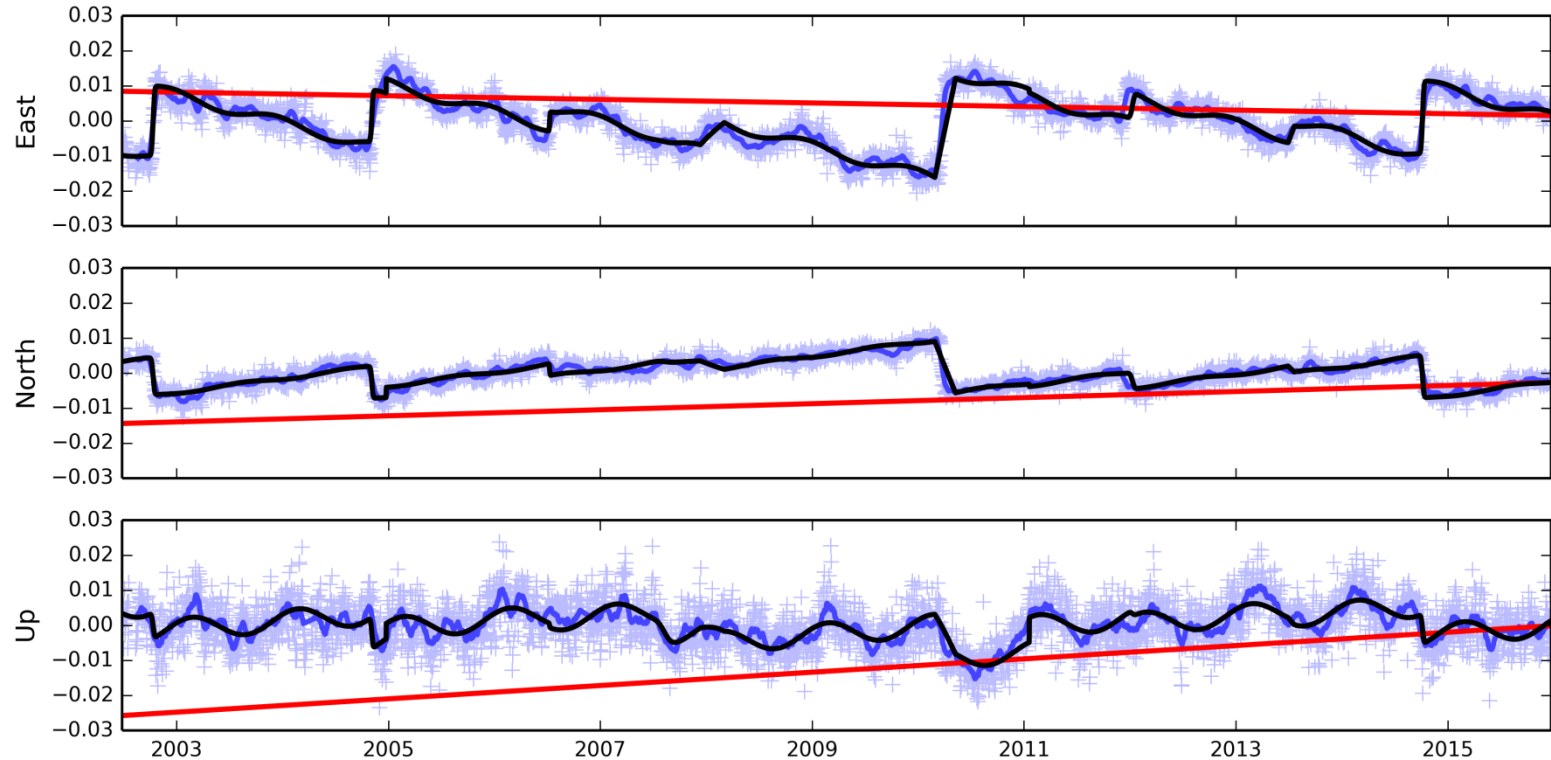
Representing time series

- Monthly stacking
- Station coordinate model
 - Velocity
 - step functions
 - post seismic deformation
 - Slow slip events
- NZGD2000 coordinate + deformation model

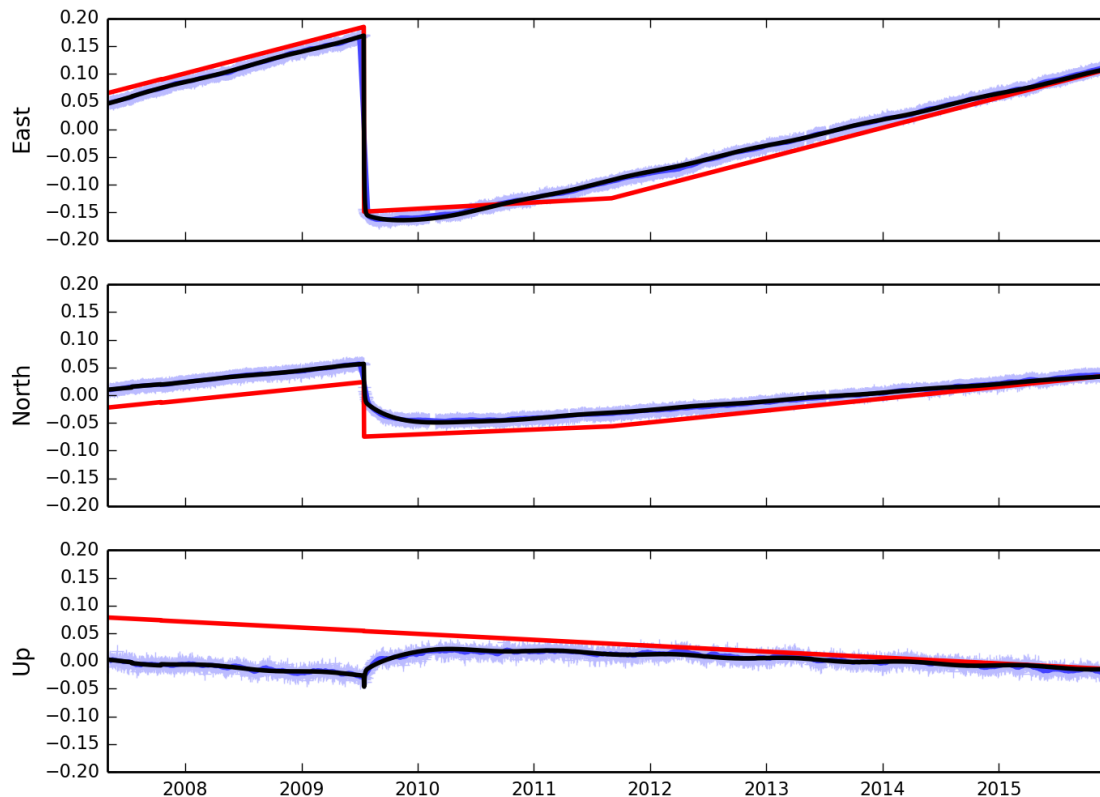
Auckland (AUCK) time series



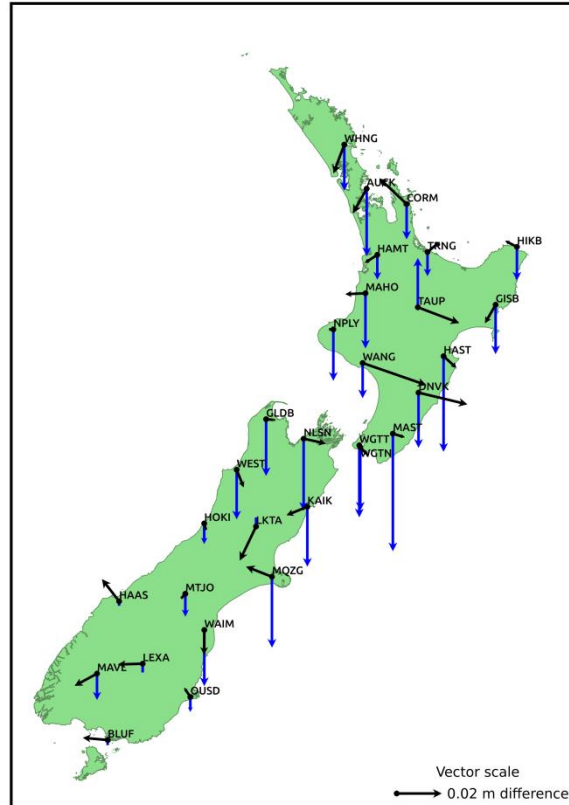
Gisborne (GISB) time series



Puysegur (PYGR) time series



Deformation model errors



Summary of errors

For generating ITRF2008 coordinates

- Aligning CORS stations daily solutions with ITRF (3mm horizontally, 8mm vertically at 95% CL)

For generating NZGD2000 coordinates

- Error in coordinate of reference marks. Depends on tectonic setting – eg where affected by slow slip the coordinate may reflect mean value through slow slip cycle.
- Error in deformation model errors affecting coordinates of older stations (30mm horizontally, 50mm vertically in 10 years)

the power of
where
drives NZ's success



Questions?

