

FIG-WB Forum on Land Administration and reform in Sub-Sahara Africa

Chris Mnyanga

Ministry of Lands

UNITED REPUBLIC OF TANZANIA]



FIG WORKING WEEK, Abuja, NIGERIA 2013 - 6-10 MAY 2013

Country at Glance

UNITED REPUBLIC OF TANZANIA



Country at a Glance

Statistic	
Total population	46,912,768 (July 2012 estimates)
Area (km ²)	947,300 Land - 885,800 including islands and Water – 61,500
Urban population%	30
Rural population%	70
Per capita GDP	1,700 (estimates of 2012)
No. of registered surveyors	224
No. of Lawyers	3,520

[Country: Reform Initiative]

3

Country Land Initiative

- High Level Objective:

To institute an effective and efficient land administration machinery that is facilitated by a well-established land administration infrastructure (*LAI*) for **Urban and Rural land certification**

[Country: Reform Initiative]

4

Country Land Initiative

◉ Implementing Agency/ies:

Ministry of Lands - providing for Policy, Legal Framework and adequate Mapping Infrastructure.

NGOs and Private Sector - for Implementation

◉ **Development Partners** - including The World Bank, Dfid, Netherlands, SIDA, DANIDA – for providing financial support

[Country: Reform Initiative]

5

[Country: Reform Initiative]

Scope of Initiative

- ◉ In the context of our current Land Reform Program the scope of initiatives include
 - Rural land certification in two of our districts
 - Urban Regularisation of property in unplanned settlements in two of our cities
 - Both to be on **PILOT BASIS** to develop best approaches for further work
 - Identification of parcels of land was done by using satellite imagery and unit cost per parcel for rural areas was USD 22.00

[Country: Reform Initiative]

Scope of Initiative

- Effective period in field was 2 years

8

Spatial framework

Prior to intervention

● Geodetic control

- None-geocentric geodetic control network based on the Arc60 Datum computed on the Clarke 1880 (modified) and a few lines of level based on MSL datum as done by the DOS.

● Base maps

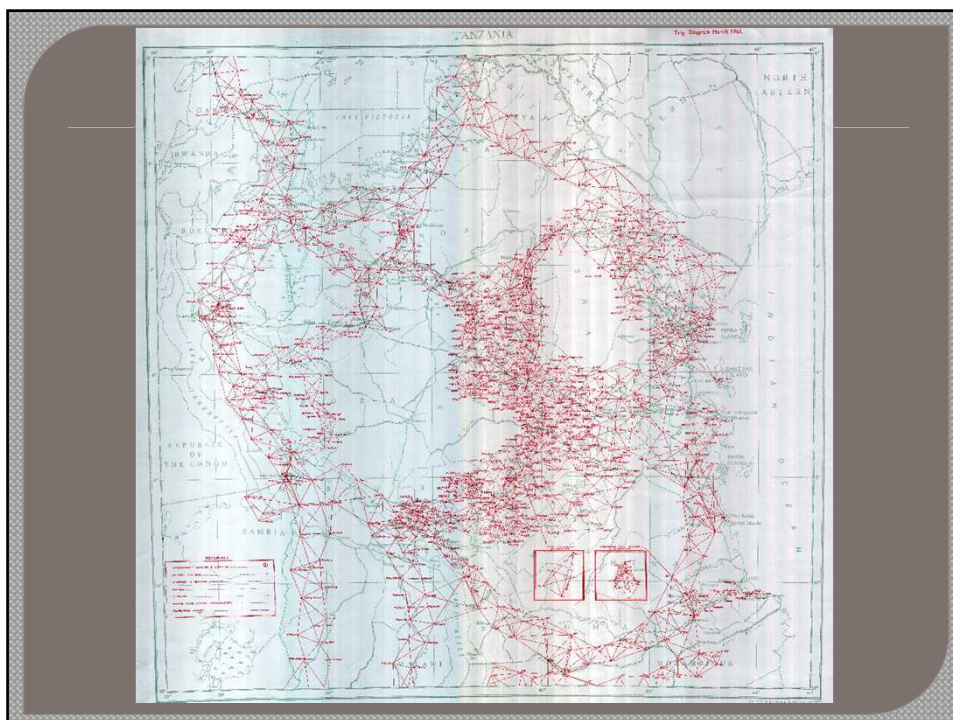
- Base maps for planning include the 1:50,000 scale maps (QDS) mainly for physical planning in the rural areas and the 1:10,000 & 1:2,500 scale maps for planning in urban area

[Country: Reform Initiative]

Spatial framework

Prior to intervention

- **Survey methodologies**
 - Classical Triangulation, Trilateration and Traversing
 - Classical Photogrammetry
- **Surveying costs**
 - Urban cadastral per plot, USD 35.00
 - Rural cadastral per acre, USD 440.00
 - Topographic per acre, USD 440.000
 - Control extension per km, 190.00



Spatial Framework Legal Basis

- The basis for the spatial framework is our old Survey Ordinance as amended from time to time however this is not in line with changing technologies in the Land Surveying industry
- **What is required for secure tenure / registration?** A piece of land is to surveyed for one to be issued with CRO which must then be registered

[Country: Reform Initiative]

11

Choice of Spatial Framework

- Decisions to establish a Spatial Framework, the New Geodetic Control Network, based on the choice of mapping and cadastral survey technology and financial resources available
- The good cost estimate for the new infrastructure was about USD 3.0 mil

[Country: Reform Initiative]

12

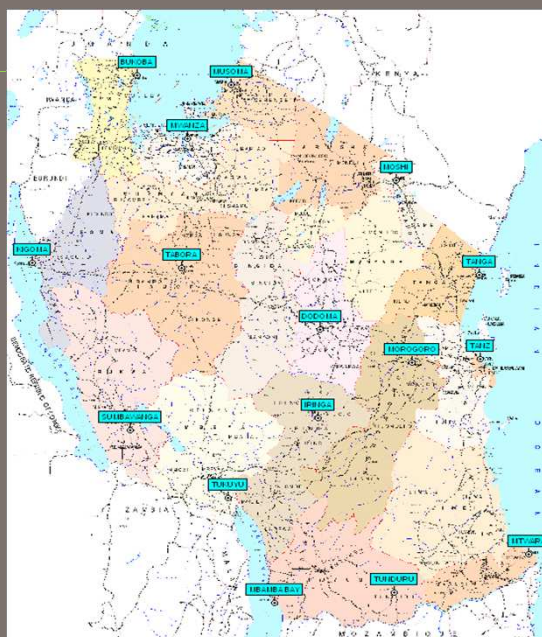
Status of Implementation

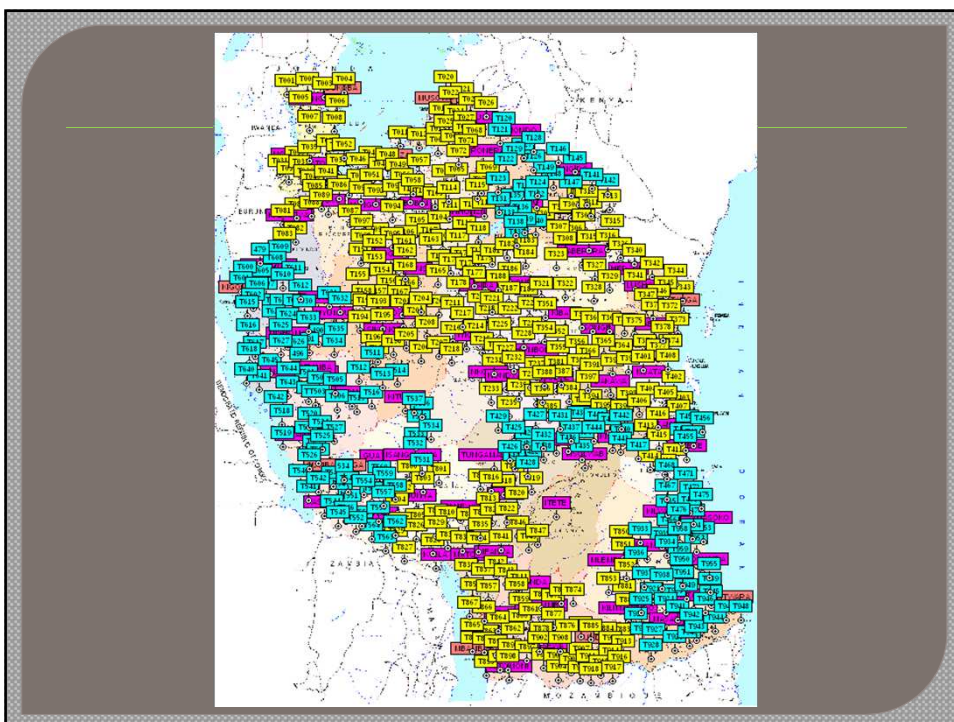
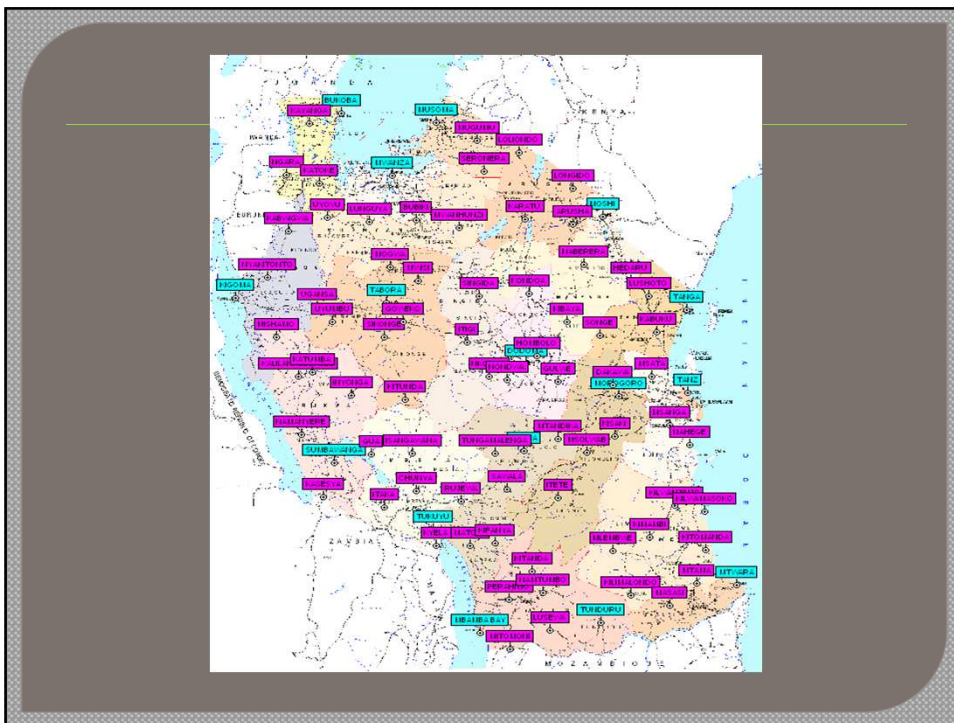
Spatial Framework

- What has been established?
 - Geodetic control covers the whole country
 - Acquisition of imagery, coverage is insignificant compared to size of country.
- What has been surveyed?
 - GPS and Earth Gravity survey done to established control points
- Who is undertaking the surveying?
 - Surveys and Mapping Division of Ministry of Lands through credit facility from the World Bank
- How long is estimated to complete?
 - Period from July 2009 – June 2013

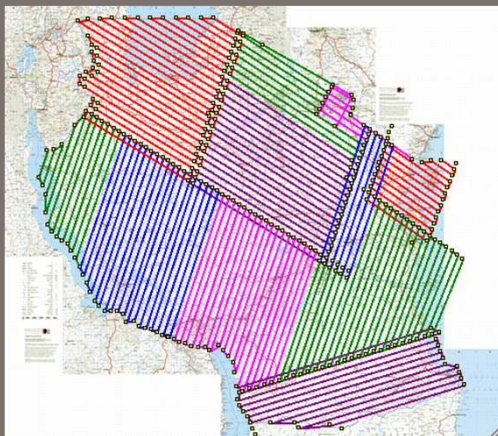
[Country: Reform Initiative]

13





AERIAL GRAVITY SURVEY PLANNING







[Country: Reform Initiative]

Scaling Up

- There is need for scaling up especially with Rural Land Certification but there is not adequate financing.
- Challenges to scaling up – The need for creation of awareness to all stake holders
- With in adequate financial resources from the government, the alternative is for Development Partners to support

[Country: Reform Initiative]

Scaling Up

- Establishment of the New Geodetic Control Network is near completion with Aerial Gravity survey in progress
- Financing is through the World Bank support

THANK YOU