



# FIG YOUNG SURVEYORS NETWORK

CHARITY WALK/RUN

01 May 2016

Hagley Park, Christchurch NZ

# WE WALK / RUN...

---

...TOGETHER FOR A CAUSE

## Hello - Welcome - Haere mai

This is the first time that FIG and its FIG Young Surveyors Network is organising a charity walk/run. We want to take this opportunity in Christchurch, New Zealand to give back and support professionals who are doing good. We all want to contribute to the betterment of the world and we are aware of the role we are playing in the world today and we want to give a fresh and positive outlook on the new environment we live in... thats what we are walking and running for.

Come and join us!!!

Eva-Maria Unger, Paula Dijkstra, Melissa O'Brien



# WE WALK / RUN...

---

...TOGETHER FOR A CAUSE



Join us - for our charity walk/run!  
Everybody can do it - it's all about  
the joined activity with our friends  
and colleagues.

We want to do good - give back and  
support professionals who are doing  
good.

With this charity walk/run we will  
support

:: MapAction

<http://www.mapaction.org>

:: FIG Foundation

<http://www.fig.net/figfoundation/>





## General Information

Meeting Time: 5pm

Start Time: 5.15 pm

Meeting Point: The Atrium Christchurch  
Netball center,  
455 Hagley Avenue\*  
Christchurch, NZ

\*you will find a map on the next page

Course options:

::Walk: 2 km or 3.5 km

::Run: 3.5 km or 5 km

Registration:

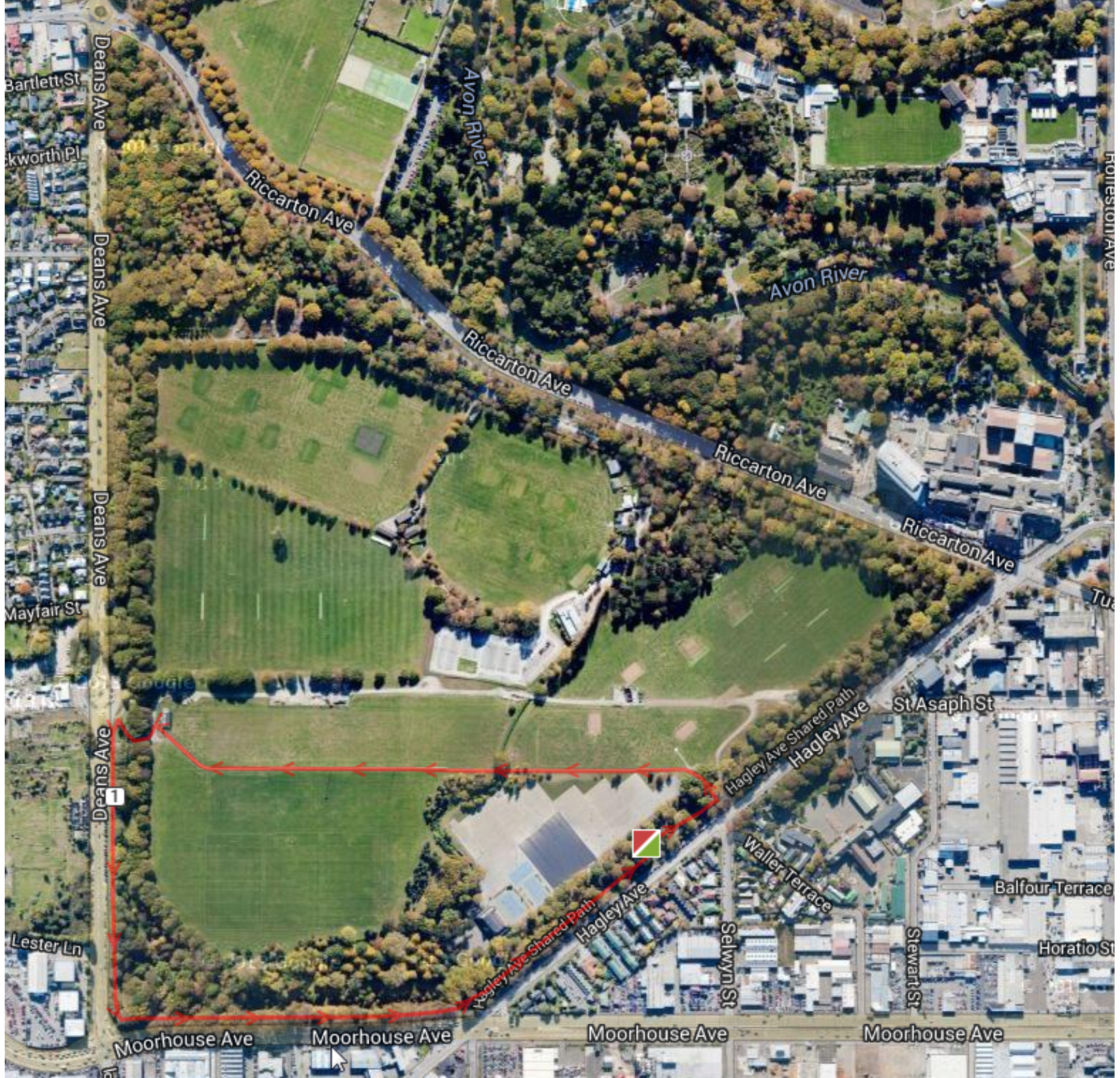
<https://www.fig.net/registrations/regform.asp?eventid=156>

## WE WALK / RUN...

---

...TOGETHER FOR A CAUSE

:: 2km Option



:: 3.5km Option



WE WALK / RUN...

---

...TOGETHER FOR A CAUSE

